



[Go to Product page](#)

Datasheet for ABIN6735983  
**anti-ZNF223 antibody (AA 95-144)**

2 Images

Overview

Quantity:	100 µL
Target:	ZNF223
Binding Specificity:	AA 95-144
Reactivity:	Human, Monkey
Host:	Rabbit
Clonality:	Polyclonal
Conjugate:	This ZNF223 antibody is un-conjugated
Application:	Western Blotting (WB), Immunohistochemistry (IHC), Immunohistochemistry (Paraffin-embedded Sections) (IHC (p))

Product Details

Immunogen:	Synthetic peptide located between aa95-144 of human ZNF223 (Q9UK11, NP_037493). Percent identity by BLAST analysis: Human, Gorilla, Gibbon, Monkey (100%).  Type of Immunogen: Synthetic peptide
Isotype:	IgG
Specificity:	Human ZNF223
Predicted Reactivity:	Percent identity by BLAST analysis: Human (100%).
Purification:	Immunoaffinity purified

## Target Details

---

Target: ZNF223

Alternative Name: ZNF223 ([ZNF223 Products](#))

Background: Name/Gene ID: ZNF223  
Family: Zinc Finger

Synonyms: ZNF223, Zinc finger protein ZNF223, Zinc finger protein 223, KRAB A domain

Gene ID: 7766

NCBI Accession: [NP\\_037493](#)

UniProt: [Q9UK11](#)

## Application Details

---

Application Notes: Approved: IHC, IHC-P, WB (0.2 - 1 µg/mL)

Comment: Target Species of Antibody: Human

Restrictions: For Research Use only

## Handling

---

Format: Lyophilized

Reconstitution: After adding water, will consist of PBS buffer with 2 % sucrose

Concentration: Lot specific

Buffer: Lyophilized from PBS with 2 % sucrose

Handling Advice: Avoid repeat freeze-thaw cycles.

Storage: 4 °C, -20 °C

Storage Comment: Long term: -20°C, the use of 50% glycerol is recommended if storing aliquots in -20°C for long term use (up to 1 year)

Short term (less than 1 week): 4°C. Avoid freeze-thaw cycles.

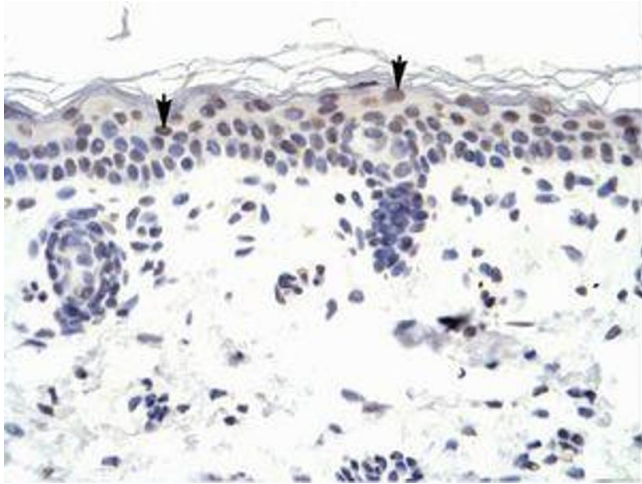


Image 1.



Image 2.