



[Go to Product page](#)

Datasheet for ABIN6735985
anti-ZMYM6 antibody (AA 625-674)

2 Images

Overview

Quantity:	100 µL
Target:	ZMYM6
Binding Specificity:	AA 625-674
Reactivity:	Human, Dog
Host:	Rabbit
Clonality:	Polyclonal
Conjugate:	This ZMYM6 antibody is un-conjugated
Application:	Western Blotting (WB), Immunohistochemistry (IHC), Immunohistochemistry (Paraffin-embedded Sections) (IHC (p))

Product Details

Immunogen:	Synthetic peptide located between aa625-674 of human ZMYM6 (O95789, NP_009098). Percent identity by BLAST analysis: Human, Gorilla, Orangutan, Gibbon (100%), Monkey, Rabbit (92%), Marmoset, Panda, Dog (85%). Type of Immunogen: Synthetic peptide
Isotype:	IgG
Specificity:	Human ZMYM6
Predicted Reactivity:	Percent identity by BLAST analysis: Human, Orangutan (100%) Dog (85%).
Purification:	Immunoaffinity purified

Target Details

Target:	ZMYM6
Alternative Name:	ZMYM6 (ZMYM6 Products)
Background:	Name/Gene ID: ZMYM6 Synonyms: ZMYM6, Buster2, MYM, Zinc finger MYM-type protein 6, ZNF258, KIAA1353, Zinc finger protein 258, Zinc finger, MYM-type 6, ZNF198L4
Gene ID:	9204
NCBI Accession:	NP_009098
UniProt:	O95789

Application Details

Application Notes:	Approved: IHC, IHC-P, WB (0.2 - 1 µg/mL)
Comment:	Target Species of Antibody: Human
Restrictions:	For Research Use only

Handling

Format:	Lyophilized
Reconstitution:	After adding water, will consist of PBS buffer with 2 % sucrose
Concentration:	Lot specific
Buffer:	Lyophilized from PBS with 2 % sucrose
Handling Advice:	Avoid repeat freeze-thaw cycles.
Storage:	4 °C, -20 °C
Storage Comment:	Long term: -20°C, the use of 50% glycerol is recommended if storing aliquots in -20°C for long term use (up to 1 year) Short term (less than 1 week): 4°C. Avoid freeze-thaw cycles.

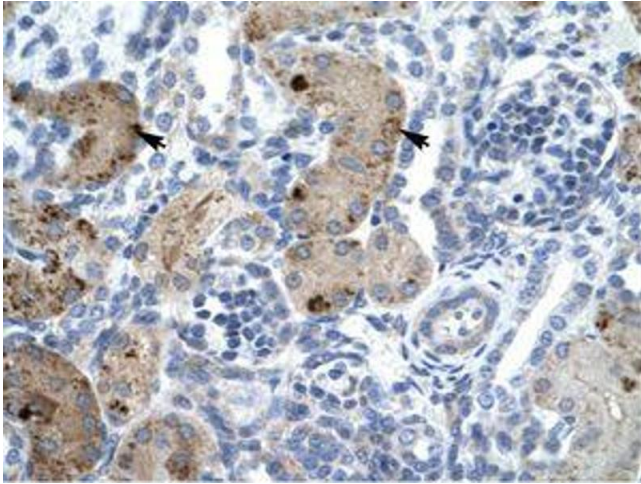


Image 1.



Image 2.