



[Go to Product page](#)

Datasheet for ABIN6736001
anti-C16orf80 antibody (C-Term)

1 Image

Overview

Quantity:	100 µL
Target:	C16orf80
Binding Specificity:	C-Term
Reactivity:	Human, Mouse, Rat, Dog, Zebrafish (Danio rerio), Cow, Guinea Pig, Horse, Rabbit, Chicken, Xenopus laevis, Monkey, Pig
Host:	Rabbit
Clonality:	Polyclonal
Conjugate:	This C16orf80 antibody is un-conjugated
Application:	Western Blotting (WB)

Product Details

Immunogen:	Synthetic peptide from C-Terminus of human C16orf80 (Q9Y6A4, NP_037374). Percent identity by BLAST analysis: Human, Chimpanzee, Gorilla, Gibbon, Monkey, Galago, Marmoset, Mouse, Elephant, Dog, Bovine, Rabbit, Horse, Pig, Opossum, Guinea pig, Turkey, Zebra finch, Chicken, Platypus, Xenopus, Catfish, Zebrafish, Sea squirt (100%), Bat (92%), Beetle (83%). Type of Immunogen: Synthetic peptide
Isotype:	IgG
Specificity:	Human C16orf80 / GTL3
Predicted Reactivity:	Percent identity by BLAST analysis: Human, Mouse, Rat, Dog, Bovine, Chicken, Xenopus, Catfish, Zebrafish, Blood fluke, Arabidopsis, Tunicate (100%) Pufferfish (93%) Tick (92%) Poplar

Product Details

(91%) Sea anemone, Beetle (83%).

Purification: Protein A purified

Target Details

Target: C16orf80

Alternative Name: CFAP20 / GTL3 ([C16orf80 Products](#))

Background: Name/Gene ID: CFAP20

Synonyms: CFAP20, C16orf80, Gene trap locus 3, EVORF, UPF0468 protein C16orf80, FSAP23, GTL3, Transcription factor IIB

Gene ID: 29105

NCBI Accession: [NP_037374](#)

UniProt: [Q9Y6A4](#)

Application Details

Application Notes: Approved: WB (0.2 - 1 µg/mL)

Comment: Target Species of Antibody: Human

Restrictions: For Research Use only

Handling

Format: Lyophilized

Reconstitution: After adding water, will consist of PBS buffer with 2 % sucrose

Concentration: Lot specific

Buffer: Lyophilized from PBS with 2 % sucrose

Handling Advice: Avoid repeat freeze-thaw cycles.

Storage: 4 °C, -20 °C

Storage Comment: Long term: -20°C, the use of 50% glycerol is recommended if storing aliquots in -20°C for long term use (up to 1 year)

Short term (less than 1 week): 4°C. Avoid freeze-thaw cycles.

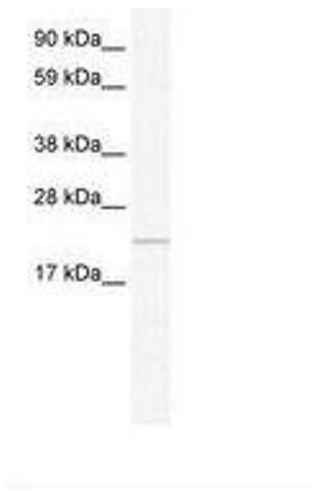


Image 1.