



[Go to Product page](#)

Datasheet for ABIN6736023
anti-PRMT3 antibody (AA 221-270)

1 Image

Overview

Quantity:	100 µL
Target:	PRMT3
Binding Specificity:	AA 221-270
Reactivity:	Human, Mouse, Rat, Dog, Cow, Guinea Pig, Horse, Monkey, Xenopus laevis, Bat, Chicken
Host:	Rabbit
Clonality:	Polyclonal
Conjugate:	This PRMT3 antibody is un-conjugated
Application:	Western Blotting (WB)

Product Details

Immunogen:	Synthetic peptide located between aa221-270 of human PRMT3 (O60678, NP_005779). Percent identity by BLAST analysis: Human, Chimpanzee, Gibbon, Monkey, Galago, Marmoset, Mouse, Rat, Elephant, Dog, Bovine, Bat, Horse, Opossum, Guinea pig, Turkey, Chicken, Platypus, Lizard, Xenopus (100%), Rabbit, Pig (92%). Type of Immunogen: Synthetic peptide
Isotype:	IgG
Specificity:	Human PRMT3
Predicted Reactivity:	Percent identity by BLAST analysis: Human, Mouse, Rat, Dog, Bovine, Horse, Guinea pig, Chicken, Xenopus (100%) Rabbit, Pig (92%).
Purification:	Immunoaffinity purified

Target Details

Target:	PRMT3
Alternative Name:	PRMT3 (PRMT3 Products)
Background:	Name/Gene ID: PRMT3 Synonyms: PRMT3, Arginine N-methyltransferase 3, HRMT1L3
Gene ID:	10196
NCBI Accession:	NP_005779
UniProt:	O60678
Pathways:	Protein targeting to Nucleus

Application Details

Application Notes:	Approved: WB (0.2 - 1 µg/mL)
Comment:	Target Species of Antibody: Human
Restrictions:	For Research Use only

Handling

Format:	Lyophilized
Reconstitution:	After adding water, will consist of PBS buffer with 2 % sucrose
Concentration:	Lot specific
Buffer:	Lyophilized from PBS with 2 % sucrose
Handling Advice:	Avoid repeat freeze-thaw cycles.
Storage:	4 °C,-20 °C
Storage Comment:	Long term: -20°C, the use of 50% glycerol is recommended if storing aliquots in -20°C for long term use (up to 1 year) Short term (less than 1 week): 4°C. Avoid freeze-thaw cycles.

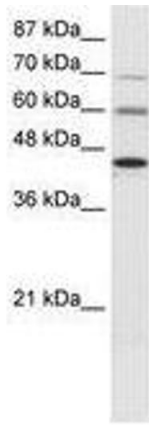


Image 1.