

Datasheet for ABIN6736030
anti-TFEB antibody (AA 170-219)[Go to Product page](#)

1 Image

Overview

Quantity:	100 µL
Target:	TFEB
Binding Specificity:	AA 170-219
Reactivity:	Human, Mouse, Rat, Cow, Pig, Horse, Goat, Rabbit, Monkey, Bat
Host:	Rabbit
Clonality:	Polyclonal
Conjugate:	This TFEB antibody is un-conjugated
Application:	Western Blotting (WB)

Product Details

Immunogen:	Synthetic peptide located between aa170-219 of human TFEB (P19484-2). Percent identity by BLAST analysis: Human, Chimpanzee, Gorilla, Gibbon, Baboon, Monkey, Galago, Marmoset, Mouse, Rat, Shrew, Goat, Bovine, Bat, Rabbit, Horse, Pig, Armadillo (100%), Elephant, Dog, Guinea pig (92%), Turkey, Zebra finch, Chicken, Lizard (85%). Type of Immunogen: Synthetic peptide
Isotype:	IgG
Specificity:	Human TFEB
Predicted Reactivity:	Percent identity by BLAST analysis: Human, Mouse, Rat, Bovine, Goat, Rabbit, Horse, Pig (100%) Dog, Guinea pig (92%) Chicken (85%).
Purification:	Immunoaffinity purified

Target Details

Target:	TFEB
Alternative Name:	TFEB (TFEB Products)
Background:	Name/Gene ID: TFEB Family: Transcription factor Synonyms: TFEB, ALPHATFEB, BHLHE35, T-cell transcription factor EB, TCFEB, Transcription factor EB
Gene ID:	7942
UniProt:	P19484

Application Details

Application Notes:	Approved: WB (0.2 - 1 µg/mL)
Comment:	Target Species of Antibody: Human
Restrictions:	For Research Use only

Handling

Format:	Lyophilized
Reconstitution:	After adding water, will consist of PBS buffer with 2 % sucrose
Concentration:	Lot specific
Buffer:	Lyophilized.
Handling Advice:	Avoid repeat freeze-thaw cycles.
Storage:	4 °C, -20 °C
Storage Comment:	Long term: -20°C, the use of 50% glycerol is recommended if storing aliquots in -20°C for long term use (up to 1 year) Short term (less than 1 week): 4°C. Avoid freeze-thaw cycles.

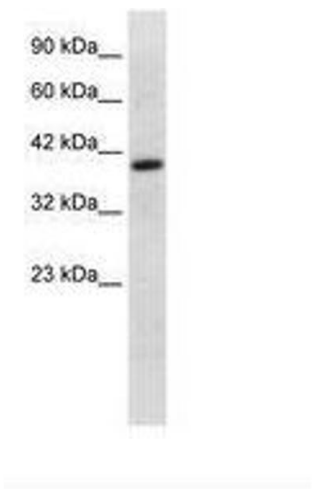


Image 1.