



[Go to Product page](#)

Datasheet for ABIN6736039
anti-NCS1 antibody (N-Term)

2 Images

Overview

Quantity:	100 µL
Target:	NCS1
Binding Specificity:	N-Term
Reactivity:	Human, Rat, Mouse, Zebrafish (Danio rerio), Cow, Chicken, Xenopus laevis
Host:	Rabbit
Clonality:	Polyclonal
Conjugate:	This NCS1 antibody is un-conjugated
Application:	Western Blotting (WB), Immunohistochemistry (IHC), Immunohistochemistry (Paraffin-embedded Sections) (IHC (p))

Product Details

Immunogen:	Synthetic peptide from N-Terminus of human NCS1 (P62166, NP_055101). Percent identity by BLAST analysis: Human, Chimpanzee, Orangutan, Mouse, Rat, Elephant, Bovine, Opossum, Zebra finch, Chicken, Xenopus, Stickleback, Pufferfish, Zebrafish (100%), Salmon (92%), Drosophila, Beetle (83%). Type of Immunogen: Synthetic peptide
Isotype:	IgG
Specificity:	Human NCS1 / NCS-1
Predicted Reactivity:	Percent identity by BLAST analysis: Human, Orangutan, Mouse, Rat, Bovine, Zebra finch, Chicken, Xenopus, Pufferfish, Zebrafish (100%) Salmon (92%) Drosophila, Mosquito, Beetle, Tick

Product Details

(83%).

Purification: Immunoaffinity purified

Target Details

Target: NCS1

Alternative Name: NCS1 / Neuronal Calcium Sensor ([NCS1 Products](#))

Background: Name/Gene ID: NCS1

Synonyms: NCS1, Frequenin (Drosophila) homolog, FREQ, FLUP, Frequenin homolog, Neuronal calcium sensor 1, Frequenin homolog (Drosophila), Frequenin-like protein, NCS-1

Gene ID: 23413

NCBI Accession: [NP_055101](#)

UniProt: [P62166](#)

Application Details

Application Notes: Approved: IHC, IHC-P, WB (0.2 - 1 µg/mL)

Comment: Target Species of Antibody: Human

Restrictions: For Research Use only

Handling

Format: Lyophilized

Reconstitution: After adding water, will consist of PBS buffer with 2 % sucrose

Concentration: Lot specific

Buffer: Lyophilized from PBS with 2 % sucrose

Handling Advice: Avoid repeat freeze-thaw cycles.

Storage: 4 °C, -20 °C

Storage Comment: Long term: -20°C, the use of 50% glycerol is recommended if storing aliquots in -20°C for long term use (up to 1 year)

Short term (less than 1 week): 4°C. Avoid freeze-thaw cycles.

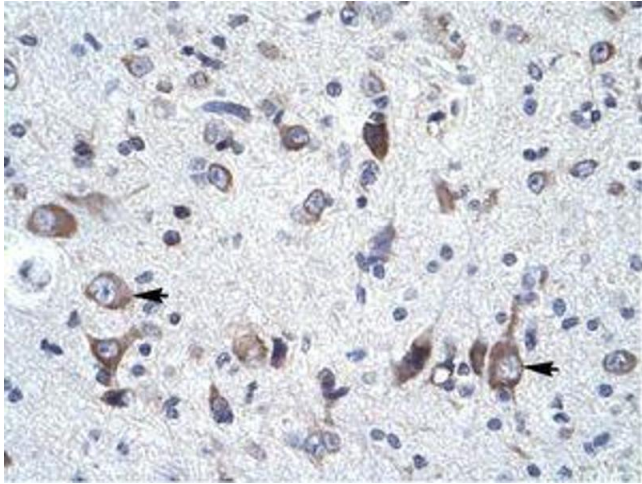


Image 1.

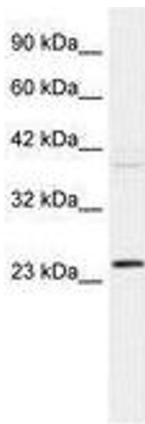


Image 2.