



[Go to Product page](#)

Datasheet for ABIN6736042

anti-C14orf101 antibody (AA 249-298)

1 Image

Overview

| | |
|----------------------|-----------------------|
| Quantity: | 100 µL |
| Target: | C14orf101 |
| Binding Specificity: | AA 249-298 |
| Reactivity: | Human, Rabbit, Monkey |
| Host: | Rabbit |
| Clonality: | Polyclonal |
| Application: | Western Blotting (WB) |

Product Details

| | |
|-----------------------|--|
| Immunogen: | Synthetic peptide located between aa249-298 of human TMEM260 (Q9NX78, NP_060269). Percent identity by BLAST analysis: Human, Chimpanzee, Gorilla, Gibbon, Monkey, Marmoset (100%), Galago, Mouse, Rat, Dog, Bovine, Horse, Pig, Guinea pig, Chicken, Platypus (92%), Elephant, Bat, Rabbit (85%). Type of Immunogen: Synthetic peptide |
| Isotype: | IgG |
| Specificity: | Human C14orf101 |
| Predicted Reactivity: | Percent identity by BLAST analysis: Human (100%) Dog, Horse, Guinea pig, Chicken (92%) Rabbit (85%). |
| Purification: | Immunoaffinity purified |

Target Details

| | |
|-------------------|--|
| Target: | C14orf101 |
| Alternative Name: | TMEM260 / C14orf101 (C14orf101 Products) |
| Background: | Name/Gene ID: TMEM260 Synonyms: TMEM260, 5930435P15, C14orf101, UPF0679 protein C14orf101, RIKEN cDNA 6720456H20 gene |
| Gene ID: | 54916 |
| NCBI Accession: | NP_060269 |
| UniProt: | Q9NX78 |

Application Details

| | |
|--------------------|-----------------------------------|
| Application Notes: | Approved: WB (0.12 µg/mL) |
| Comment: | Target Species of Antibody: Human |
| Restrictions: | For Research Use only |

Handling

| | |
|------------------|---|
| Format: | Lyophilized |
| Reconstitution: | After adding water, will consist of PBS buffer with 2 % sucrose |
| Concentration: | Lot specific |
| Buffer: | Lyophilized from PBS with 2 % sucrose |
| Handling Advice: | Avoid repeat freeze-thaw cycles. |
| Storage: | 4 °C, -20 °C |
| Storage Comment: | Long term: -20°C, the use of 50% glycerol is recommended if storing aliquots in -20°C for long term use (up to 1 year) Short term (less than 1 week): 4°C. Avoid freeze-thaw cycles. |

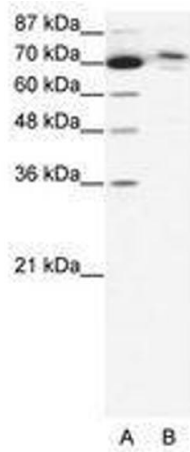


Image 1.