



[Go to Product page](#)

Datasheet for ABIN6736062
anti-ZNF276 antibody (AA 284-333)

1 Image

Overview

Quantity:	100 µL
Target:	ZNF276
Binding Specificity:	AA 284-333
Reactivity:	Human, Guinea Pig, Horse, Monkey
Host:	Rabbit
Clonality:	Polyclonal
Conjugate:	This ZNF276 antibody is un-conjugated
Application:	Western Blotting (WB)

Product Details

Immunogen:	Synthetic peptide located between aa284-333 of human ZNF276 (Q8N554, NP_689500). Percent identity by BLAST analysis: Human, Chimpanzee, Gorilla, Gibbon, Monkey, Marmoset, Guinea pig (100%), Elephant, Dog, Bovine, Bat (92%), Galago, Platypus (85%), Mouse, Rat (84%). Type of Immunogen: Synthetic peptide
Isotype:	IgG
Specificity:	Human ZNF276
Predicted Reactivity:	Percent identity by BLAST analysis: Human (100%) Dog, Bovine (92%).
Purification:	Immunoaffinity purified

Target Details

Target:	ZNF276
Alternative Name:	ZNF276 (ZNF276 Products)
Background:	Name/Gene ID: ZNF276 Synonyms: ZNF276, CENP-Z, Centromere protein Z, Zinc finger protein 276, ZNF477, ZFP276, Zfp-276, CENPZ, Zinc finger protein 477
Gene ID:	92822
NCBI Accession:	NP_689500
UniProt:	Q8N554

Application Details

Application Notes:	Approved: WB (0.2 - 1 µg/mL)
Comment:	Target Species of Antibody: Human
Restrictions:	For Research Use only

Handling

Format:	Lyophilized
Reconstitution:	After adding water, will consist of PBS buffer with 2 % sucrose
Concentration:	Lot specific
Buffer:	Lyophilized from PBS with 2 % sucrose
Handling Advice:	Avoid repeat freeze-thaw cycles.
Storage:	4 °C, -20 °C
Storage Comment:	Long term: -20°C, the use of 50% glycerol is recommended if storing aliquots in -20°C for long term use (up to 1 year) Short term (less than 1 week): 4°C. Avoid freeze-thaw cycles.

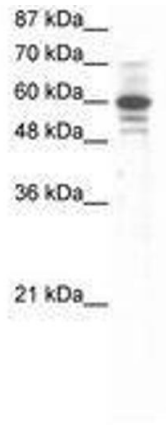


Image 1.