



[Go to Product page](#)

Datasheet for ABIN6736085  
**anti-SPIB antibody (C-Term)**

1 Image

Overview

Quantity:	100 µL
Target:	SPIB
Binding Specificity:	C-Term
Reactivity:	Human, Mouse, Rat, Dog, Rabbit, Cow, Guinea Pig, Horse, Zebrafish (Danio rerio)
Host:	Rabbit
Clonality:	Polyclonal
Conjugate:	This SPIB antibody is un-conjugated
Application:	Western Blotting (WB)

Product Details

Immunogen:	Synthetic peptide from C-Terminus of human SPIB (Q01892, NP_003112). Percent identity by BLAST analysis: Human, Gorilla, Monkey, Galago, Mouse, Rat, Elephant, Panda, Dog, Bovine, Rabbit, Horse, Guinea pig, Zebrafish (100%), Xenopus, Salmon (92%), Gibbon, Marmoset, Pig, Opossum, Turkey, Zebra finch, Chicken, Platypus, Lizard, Trout, Catfish (91%), Sablefish (85%).  Type of Immunogen: Synthetic peptide
Isotype:	IgG
Specificity:	Human SPIB
Predicted Reactivity:	Percent identity by BLAST analysis: Human, Mouse, Rat, Bovine, Rabbit, Horse (100%) Xenopus (92%).
Purification:	Immunoaffinity purified

## Target Details

---

Target: SPIB

Alternative Name: SPIB ([SPIB Products](#))

Background: Name/Gene ID: SPIB

Synonyms: SPIB, SPI-B, Spi-b transcription factor, Transcription factor Spi-B

Gene ID: 6689

NCBI Accession: [NP\\_003112](#)

UniProt: [Q01892](#)

## Application Details

---

Application Notes: Approved: WB (0.2 - 1 µg/mL)

Comment: Target Species of Antibody: Human

Restrictions: For Research Use only

## Handling

---

Format: Lyophilized

Reconstitution: After adding water, will consist of PBS buffer with 2 % sucrose

Concentration: Lot specific

Buffer: Lyophilized from PBS with 2 % sucrose

Handling Advice: Avoid repeat freeze-thaw cycles.

Storage: 4 °C, -20 °C

Storage Comment: Long term: -20°C, the use of 50% glycerol is recommended if storing aliquots in -20°C for long term use (up to 1 year)  
Short term (less than 1 week): 4°C. Avoid freeze-thaw cycles.

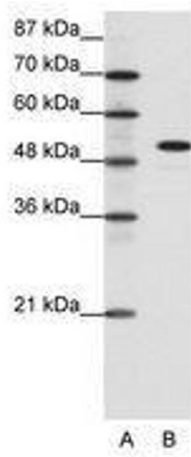


Image 1.