



[Go to Product page](#)

Datasheet for ABIN6736088
anti-GFI1 antibody (N-Term)

1 Image

Overview

Quantity:	100 µL
Target:	GFI1
Binding Specificity:	N-Term
Reactivity:	Human, Rat, Mouse, Cow, Dog, Rabbit, Guinea Pig, Horse, Pig, Bat
Host:	Rabbit
Clonality:	Polyclonal
Conjugate:	This GFI1 antibody is un-conjugated
Application:	Western Blotting (WB)

Product Details

Immunogen:	Synthetic peptide from N-Terminus of human GFI1 (Q99684, NP_005254). Percent identity by BLAST analysis: Human, Chimpanzee, Gorilla, Galago, Marmoset, Mouse, Rat, Elephant, Dog, Cat, Bovine, Bat, Rabbit, Horse, Pig, Guinea pig (100%), Monkey (92%). Type of Immunogen: Synthetic peptide
Isotype:	IgG
Specificity:	Human GFI1
Predicted Reactivity:	Percent identity by BLAST analysis: Human, Mouse, Rat, Dog, Bovine, Rabbit, Horse, Pig, Guinea pig (100%).
Purification:	Immunoaffinity purified

Target Details

Target:	GFI1
Alternative Name:	GFI1 (GFI1 Products)
Background:	Name/Gene ID: GFI1 Synonyms: GFI1, Growth factor independence-1, GFI-1, GFI1A, SCN2, Zinc finger protein 163, Zinc finger protein Gfi-1, ZNF163, Growth factor independent 1
Gene ID:	2672
NCBI Accession:	NP_005254
UniProt:	Q99684

Application Details

Application Notes:	Approved: WB (0.2 - 1 µg/mL)
Comment:	Target Species of Antibody: Human
Restrictions:	For Research Use only

Handling

Format:	Lyophilized
Reconstitution:	After adding water, will consist of PBS buffer with 2 % sucrose
Concentration:	Lot specific
Buffer:	Lyophilized from PBS with 2 % sucrose
Handling Advice:	Avoid repeat freeze-thaw cycles.
Storage:	4 °C, -20 °C
Storage Comment:	Long term: -20°C, the use of 50% glycerol is recommended if storing aliquots in -20°C for long term use (up to 1 year) Short term (less than 1 week): 4°C. Avoid freeze-thaw cycles.

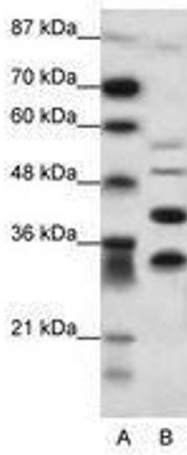


Image 1.