



[Go to Product page](#)

Datasheet for ABIN6736098  
**anti-GTF2F1 antibody (N-Term)**

1 Image

### Overview

Quantity:	100 µL
Target:	GTF2F1
Binding Specificity:	N-Term
Reactivity:	Human, Mouse, Dog, Guinea Pig, Rabbit, Cow, Horse, Monkey, Pig, Zebrafish (Danio rerio), Bat, Hamster
Host:	Rabbit
Clonality:	Polyclonal
Conjugate:	This GTF2F1 antibody is un-conjugated
Application:	Western Blotting (WB)

### Product Details

Immunogen:	Synthetic peptide from N-Terminus of human GTF2F1 (P35269, NP_002087). Percent identity by BLAST analysis: Human, Chimpanzee, Gorilla, Gibbon, Monkey, Marmoset, Hamster, Dog, Bovine, Bat, Rabbit, Horse, Pig, Guinea pig (100%), Lizard (92%), Mouse, Rat, Zebrafish (85%), Platypus (84%).  Type of Immunogen: Synthetic peptide
Isotype:	IgG
Specificity:	Human GTF2F1
Predicted Reactivity:	Percent identity by BLAST analysis: Human, Dog, Rabbit, Guinea pig (100%) Mouse, Zebrafish (85%).

## Product Details

---

Purification: Immunoaffinity purified

## Target Details

---

Target: GTF2F1

Alternative Name: RAP74 / GTF2F1 ([GTF2F1 Products](#))

Background: Name/Gene ID: GTF2F1

Synonyms: GTF2F1, BTF4, TF2F1, TFIIIF, TFIIIF-alpha, RAP74

Gene ID: 2962

NCBI Accession: [NP\\_002087](#)

UniProt: [P35269](#)

## Application Details

---

Application Notes: Approved: WB (0.2 - 1 µg/mL)

Comment: Target Species of Antibody: Human

Restrictions: For Research Use only

## Handling

---

Format: Lyophilized

Reconstitution: After adding water, will consist of PBS buffer with 2 % sucrose

Concentration: Lot specific

Buffer: Lyophilized.

Handling Advice: Avoid repeat freeze-thaw cycles.

Storage: 4 °C, -20 °C

Storage Comment: Long term: -20°C, the use of 50% glycerol is recommended if storing aliquots in -20°C for long term use (up to 1 year)

Short term (less than 1 week): 4°C. Avoid freeze-thaw cycles.

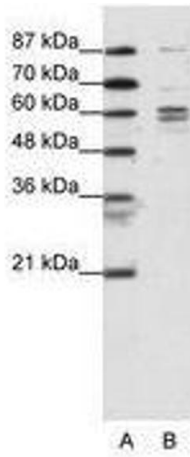


Image 1.