



Datasheet for ABIN6736105 **anti-DDX25 antibody (AA 355-404)**



[Go to Product page](#)

1 Image

Overview

Quantity:	100 µL
Target:	DDX25
Binding Specificity:	AA 355-404
Reactivity:	Human, Mouse, Rat, Dog, Cow, Rabbit, Guinea Pig, Horse, Pig, Bat
Host:	Rabbit
Clonality:	Polyclonal
Conjugate:	This DDX25 antibody is un-conjugated
Application:	Western Blotting (WB)

Product Details

Immunogen:	Synthetic peptide located between aa355-404 of human DDX25 (Q9UHL0-2, NP_037396). Percent identity by BLAST analysis: Human, Chimpanzee, Gibbon, Monkey, Galago, Mouse, Rat, Elephant, Dog, Bovine, Bat, Rabbit, Horse, Pig, Opossum, Guinea pig, Platypus (100%), Gorilla, Marmoset (92%), Xenopus (85%). Type of Immunogen: Synthetic peptide
Isotype:	IgG
Specificity:	Human DDX25
Predicted Reactivity:	Percent identity by BLAST analysis: Human, Mouse, Rat, Dog, Bovine, Rabbit (100%) Xenopus (85%).
Purification:	Immunoaffinity purified

Target Details

Target:	DDX25
Alternative Name:	DDX25 (DDX25 Products)
Background:	Name/Gene ID: DDX25 Synonyms: DDX25, DEAD box protein 25, GRTH
Gene ID:	29118
NCBI Accession:	NP_037396

Application Details

Application Notes:	Approved: WB (0.2 - 1 µg/mL)
Comment:	Target Species of Antibody: Human
Restrictions:	For Research Use only

Handling

Format:	Lyophilized
Reconstitution:	After adding water, will consist of PBS buffer with 2 % sucrose
Concentration:	Lot specific
Buffer:	Lyophilized from PBS with 2 % sucrose
Handling Advice:	Avoid repeat freeze-thaw cycles.
Storage:	4 °C,-20 °C
Storage Comment:	Long term: -20°C, the use of 50% glycerol is recommended if storing aliquots in -20°C for long term use (up to 1 year) Short term (less than 1 week): 4°C. Avoid freeze-thaw cycles.

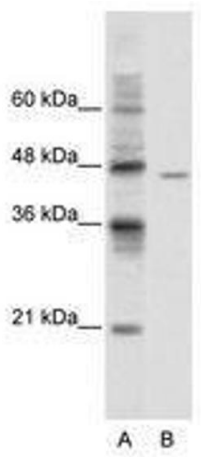


Image 1.