



Datasheet for ABIN673614  
**anti-ABCB6 antibody (AA 401-520)**



[Go to Product page](#)

1 Image

Overview

Quantity:	100 µL
Target:	ABCB6
Binding Specificity:	AA 401-520
Reactivity:	Human, Mouse, Rat
Host:	Rabbit
Clonality:	Polyclonal
Conjugate:	This ABCB6 antibody is un-conjugated
Application:	ELISA, Immunofluorescence (Paraffin-embedded Sections) (IF (p)), Immunofluorescence (Cultured Cells) (IF (cc)), Immunohistochemistry (Paraffin-embedded Sections) (IHC (p)), Immunohistochemistry (Frozen Sections) (IHC (fro))

Product Details

Immunogen:	KLH conjugated synthetic peptide derived from human ABCB6
Isotype:	IgG
Cross-Reactivity:	Human, Mouse, Rat
Predicted Reactivity:	Dog,Cow,Pig,Horse,Guinea Pig
Purification:	Purified by Protein A.

Target Details

Target:	ABCB6
---------	-------

## Target Details

---

Alternative Name: [ABCB6 \(ABCB6 Products\)](#)

---

Background: Synonyms: ABC, ABC14, EST45597, ABC 14, ABC-14, ABCB 6, ABCB-6, PRP, UMAT, ABC transporter umat, MTABC3, Mt-ABC transporter 3, umat, Mitochondrial precursor, Mitochondrial ABC transporter 3, Mitochondrial abc protein 3, ATP-binding cassette, sub-family B, member 6, mitochondrial precursor, ATP binding cassette, sub family B MDR/TAP, member 6, P glycoprotein related protein, Abcb6, ABCB6\_HUMAN, ATP binding cassette sub family B member 6, mitochondrial precursor, ATP-binding cassette sub-family B member 6, Mitochondrial ABC transporter 3, mitochondrial, Mt ABC transporter 3, P-glycoprotein-related protein, Ubiquitously-expressed mammalian ABC half transporter, UMAT, Ubiquitously expressed mammalian ABC half transporter.

Background: The membrane-associated protein encoded by this gene is a member of the superfamily of ATP-binding cassette (ABC) transporters. ABC proteins transport various molecules across extra- and intra-cellular membranes. ABC genes are divided into seven distinct subfamilies (ABC1, MDR/TAP, MRP, ALD, OABP, GCN20, White). This protein is a member of the MDR/TAP subfamily. Members of the MDR/TAP subfamily are involved in multidrug resistance as well as antigen presentation. This half-transporter likely plays a role in mitochondrial function. Localized to 2q26, this gene is considered a candidate gene for lethal neonatal metabolic syndrome, a disorder of mitochondrial function.

---

Gene ID: 10058

---

Pathways: [Transition Metal Ion Homeostasis](#)

---

## Application Details

---

Application Notes: ELISA 1:500-1000  
IHC-P 1:200-400  
IHC-F 1:100-500  
IF(IHC-P) 1:50-200  
IF(IHC-F) 1:50-200  
IF(ICC) 1:50-200

---

Restrictions: For Research Use only

---

## Handling

---

Format: Liquid

---

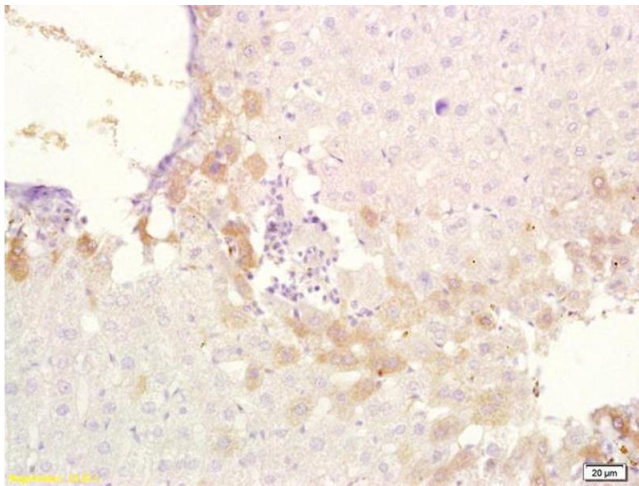
Concentration: 1 µg/µL

---

## Handling

Buffer:	0.01M TBS( pH 7.4) with 1 % BSA, 0.02 % Proclin300 and 50 % Glycerol.
Preservative:	ProClin
Precaution of Use:	This product contains ProClin: a POISONOUS AND HAZARDOUS SUBSTANCE, which should be handled by trained staff only.
Storage:	4 °C,-20 °C
Storage Comment:	Shipped at 4°C. Store at -20°C for one year. Avoid repeated freeze/thaw cycles.
Expiry Date:	12 months

## Images



### Immunohistochemistry

**Image 1.** Formalin-fixed and paraffin embedded rat liver tissue labeled with Anti-ABCB6 Polyclonal Antibody, Unconjugated at 1:200, followed by conjugation to the secondary antibody and DAB staining