

Datasheet for ABIN6736144
anti-CTCF antibody (AA 181-230)



[Go to Product page](#)

1 Image

Overview

Quantity:	100 µL
Target:	CTCF
Binding Specificity:	AA 181-230
Reactivity:	Human, Mouse, Rat, Cow, Dog, Monkey, Rabbit, Pig, Horse, Bat
Host:	Rabbit
Clonality:	Polyclonal
Conjugate:	This CTCF antibody is un-conjugated
Application:	Western Blotting (WB)

Product Details

Immunogen:	Synthetic peptide located between aa181-230 of human CTCF (P49711, NP_006556). Percent identity by BLAST analysis: Human, Chimpanzee, Gorilla, Gibbon, Monkey, Galago, Marmoset, Mouse, Rat, Elephant, Dog, Bovine, Bat, Rabbit, Horse, Pig, Opossum, Platypus (100%), Hamster, Turkey, Zebra finch, Chicken (92%), Xenopus (85%). Type of Immunogen: Synthetic peptide
Isotype:	IgG
Specificity:	Human CTCF
Predicted Reactivity:	Percent identity by BLAST analysis: Human, Mouse, Rat, Dog, Bovine, Rabbit, Horse (100%) Chicken (92%).
Purification:	Immunoaffinity purified

Target Details

Target:	CTCF
Alternative Name:	CTCF (CTCF Products)
Background:	Name/Gene ID: CTCF Family: Transcription factor Synonyms: CTCF, 11-zinc finger protein, CCCTC-binding factor, Transcriptional repressor CTCF, CTCFL paralog
Gene ID:	10664
NCBI Accession:	NP_006556
UniProt:	P49711

Application Details

Application Notes:	Approved: WB (0.2 - 1 µg/mL)
Comment:	Target Species of Antibody: Human
Restrictions:	For Research Use only

Handling

Format:	Lyophilized
Reconstitution:	After adding water, will consist of PBS buffer with 2 % sucrose
Concentration:	Lot specific
Buffer:	Lyophilized.
Handling Advice:	Avoid repeat freeze-thaw cycles.
Storage:	4 °C,-20 °C
Storage Comment:	Long term: -20°C, the use of 50% glycerol is recommended if storing aliquots in -20°C for long term use (up to 1 year) Short term (less than 1 week): 4°C. Avoid freeze-thaw cycles.

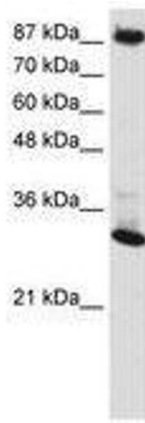


Image 1.