



Datasheet for ABIN6736157
anti-MYST2 antibody (N-Term)



[Go to Product page](#)

1 Image

Overview

Quantity:	100 µL
Target:	MYST2
Binding Specificity:	N-Term
Reactivity:	Human, Mouse, Rat, Dog, Cow, Rabbit, Guinea Pig, Horse, Pig, Bat, Monkey
Host:	Rabbit
Clonality:	Polyclonal
Conjugate:	This MYST2 antibody is un-conjugated
Application:	Western Blotting (WB)

Product Details

Immunogen:	Synthetic peptide from N-Terminus of human KAT7 (O95251, NP_008998). Percent identity by BLAST analysis: Human, Chimpanzee, Gorilla, Galago, Marmoset, Mouse, Rat, Elephant, Panda, Dog, Bovine, Bat, Rabbit, Horse, Pig, Guinea pig (100%), Opossum, Turkey, Zebra finch, Chicken, Lizard, Xenopus (92%), Salmon (84%). Type of Immunogen: Synthetic peptide
Isotype:	IgG
Specificity:	Human MYST2
Predicted Reactivity:	Percent identity by BLAST analysis: Mouse, Rat, Horse, Pig (100%) Chicken (92%) Xenopus (84%).
Purification:	Immunoaffinity purified

Target Details

Target:	MYST2
Alternative Name:	MYST2 / HBO1 (MYST2 Products)
Background:	Name/Gene ID: KAT7 Synonyms: KAT7, Histone acetyltransferase KAT7, HBO1, Lysine acetyltransferase 7, HBOA, MYST-2, MYST2, K(lysine) acetyltransferase 7, ZC2HC7
Gene ID:	11143
NCBI Accession:	NP_008998
UniProt:	O95251

Application Details

Application Notes:	Approved: WB (0.2 - 1 µg/mL)
Comment:	Target Species of Antibody: Human
Restrictions:	For Research Use only

Handling

Format:	Lyophilized
Reconstitution:	After adding water, will consist of PBS buffer with 2 % sucrose
Concentration:	Lot specific
Buffer:	Lyophilized from PBS with 2 % sucrose
Handling Advice:	Avoid repeat freeze-thaw cycles.
Storage:	4 °C, -20 °C
Storage Comment:	Long term: -20°C, the use of 50% glycerol is recommended if storing aliquots in -20°C for long term use (up to 1 year) Short term (less than 1 week): 4°C. Avoid freeze-thaw cycles.

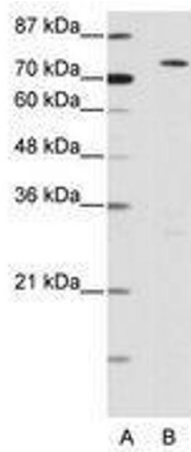


Image 1.