



[Go to Product page](#)

Datasheet for ABIN6736167
anti-POU3F2 antibody (C-Term)

1 Image

Overview

Quantity:	100 µL
Target:	POU3F2
Binding Specificity:	C-Term
Reactivity:	Human, Rat, Mouse, Cow, Pig, Horse, Monkey, Bat
Host:	Rabbit
Clonality:	Polyclonal
Conjugate:	This POU3F2 antibody is un-conjugated
Application:	Western Blotting (WB)

Product Details

Immunogen:	Synthetic peptide from C-Terminus of human POU3F2 (P20265, NP_005595). Percent identity by BLAST analysis: Human, Chimpanzee, Gorilla, Marmoset, Mouse, Rat, Bovine, Bat, Horse, Pig, Opossum (100%), Galago, Lizard, Xenopus (92%). Type of Immunogen: Synthetic peptide
Isotype:	IgG
Specificity:	Human POU3F2
Predicted Reactivity:	Percent identity by BLAST analysis: Human, Rat, Bovine, Pig (100%).
Purification:	Immunoaffinity purified

Target Details

Target:	POU3F2
Alternative Name:	BRN2 / POU3F2 (POU3F2 Products)
Background:	Name/Gene ID: POU3F2 Synonyms: POU3F2, Brain-2, Brn-2, BRN2, Oct-7, Octamer-binding protein 7, OTF7, POU class 3 homeobox 2, N-Oct3, OCT7, OTF-7, POUF3
Gene ID:	5454
NCBI Accession:	NP_005595
UniProt:	P20265

Application Details

Application Notes:	Approved: WB (0.2 - 1 µg/mL)
Comment:	Target Species of Antibody: Human
Restrictions:	For Research Use only

Handling

Format:	Lyophilized
Reconstitution:	After adding water, will consist of PBS buffer with 2 % sucrose
Concentration:	Lot specific
Buffer:	Lyophilized.
Handling Advice:	Avoid repeat freeze-thaw cycles.
Storage:	4 °C,-20 °C
Storage Comment:	Long term: -20°C, the use of 50% glycerol is recommended if storing aliquots in -20°C for long term use (up to 1 year) Short term (less than 1 week): 4°C. Avoid freeze-thaw cycles.

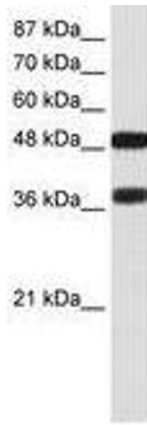


Image 1.