



Datasheet for ABIN6736185  
**anti-KLHL13 antibody (N-Term)**



[Go to Product page](#)

2 Images

Overview

Quantity:	100 µL
Target:	KLHL13
Binding Specificity:	N-Term
Reactivity:	Human, Mouse, Rat, Cow, Rabbit, Guinea Pig, Horse, Bat, Monkey
Host:	Rabbit
Clonality:	Polyclonal
Conjugate:	This KLHL13 antibody is un-conjugated
Application:	Western Blotting (WB), Immunohistochemistry (IHC), Immunohistochemistry (Paraffin-embedded Sections) (IHC (p))

Product Details

Immunogen:	Synthetic peptide from N-Terminus of human KLHL13 (Q9P2N7, NP_277030). Percent identity by BLAST analysis: Human, Gorilla, Gibbon, Monkey, Galago, Marmoset, Mouse, Rat, Elephant, Panda, Bovine, Bat, Rabbit, Horse, Guinea pig (100%), Zebra finch (92%), Xenopus (85%).  Type of Immunogen: Synthetic peptide
Isotype:	IgG
Specificity:	Human KLHL13
Predicted Reactivity:	Percent identity by BLAST analysis: Rat, Rabbit, Horse (100%).
Purification:	Immunoaffinity purified

## Target Details

---

Target:	KLHL13
Alternative Name:	KLHL13 ( <a href="#">KLHL13 Products</a> )
Background:	Name/Gene ID: KLHL13  Synonyms: KLHL13, BKLHD2, Kelch-like 13 (Drosophila), Kelch-like protein 13, KIAA1309
Gene ID:	90293
NCBI Accession:	<a href="#">NP_277030</a>
UniProt:	<a href="#">Q9P2N7</a>

## Application Details

---

Application Notes:	Approved: IHC, IHC-P, WB (0.2 - 1 µg/mL)
Comment:	Target Species of Antibody: Human
Restrictions:	For Research Use only

## Handling

---

Format:	Lyophilized
Reconstitution:	After adding water, will consist of PBS buffer with 2 % sucrose
Concentration:	Lot specific
Buffer:	Lyophilized from PBS with 2 % sucrose
Handling Advice:	Avoid repeat freeze-thaw cycles.
Storage:	4 °C, -20 °C
Storage Comment:	Long term: -20°C, the use of 50% glycerol is recommended if storing aliquots in -20°C for long term use (up to 1 year) Short term (less than 1 week): 4°C. Avoid freeze-thaw cycles.

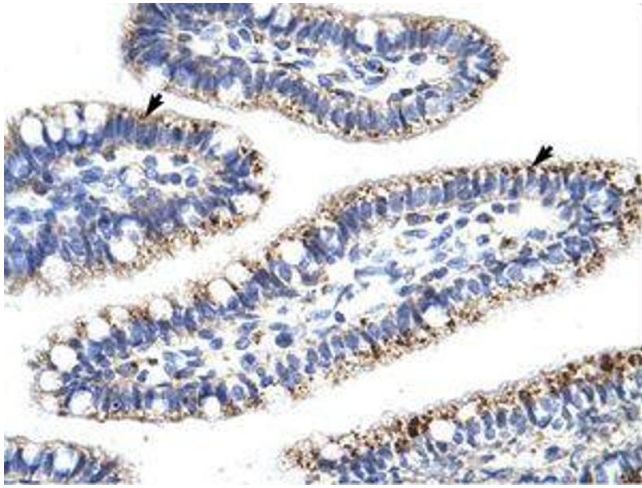


Image 1.

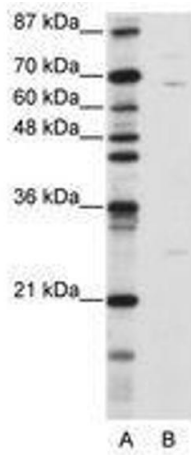


Image 2.