



[Go to Product page](#)

Datasheet for ABIN6736193

anti-EIF4A2 antibody (N-Term)

1 Image

Overview

Quantity:	100 µL
Target:	EIF4A2
Binding Specificity:	N-Term
Reactivity:	Human, Rat, Mouse, Dog, Cow, Pig, Guinea Pig, Horse, Rabbit, Monkey, Hamster
Host:	Rabbit
Clonality:	Polyclonal
Conjugate:	This EIF4A2 antibody is un-conjugated
Application:	Western Blotting (WB)

Product Details

Immunogen:	Synthetic peptide from N-Terminus of human EIF4A2 (Q14240, NP_001958). Percent identity by BLAST analysis: Human, Chimpanzee, Orangutan, Monkey, Galago, Mouse, Rat, Hamster, Dog, Bovine, Rabbit, Horse, Pig, Guinea pig (100%), Gorilla, Bat (93%), Zebra finch, Chicken (85%). Type of Immunogen: Synthetic peptide
Isotype:	IgG
Specificity:	Human EIF4A2
Predicted Reactivity:	Percent identity by BLAST analysis: Human, Mouse, Dog, Bovine, Rabbit, Horse, Pig (100%) Rat, Guinea pig (93%).
Purification:	Immunoaffinity purified

Target Details

Target:	EIF4A2
Alternative Name:	EIF4A2 (EIF4A2 Products)
Background:	Name/Gene ID: EIF4A2 Synonyms: EIF4A2, BM-010, EIF-4A-II, EIF4A, EIF4A-II, EIF4F, DDX2B
Gene ID:	1974
NCBI Accession:	NP_001958
UniProt:	Q14240

Application Details

Application Notes:	Approved: WB (0.2 - 1 µg/mL)
Comment:	Target Species of Antibody: Human
Restrictions:	For Research Use only

Handling

Format:	Lyophilized
Reconstitution:	After adding water, will consist of PBS buffer with 2 % sucrose
Concentration:	Lot specific
Buffer:	Lyophilized from PBS with 2 % sucrose
Handling Advice:	Avoid repeat freeze-thaw cycles.
Storage:	4 °C, -20 °C
Storage Comment:	Long term: -20°C, the use of 50% glycerol is recommended if storing aliquots in -20°C for long term use (up to 1 year) Short term (less than 1 week): 4°C. Avoid freeze-thaw cycles.

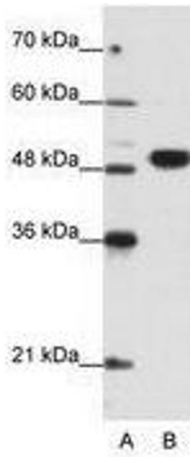


Image 1.