

Datasheet for ABIN6736202  
**anti-NOL4 antibody (AA 239-288)**[Go to Product page](#)

## 2 Images

## Overview

Quantity:	100 µL
Target:	NOL4
Binding Specificity:	AA 239-288
Reactivity:	Human, Mouse, Rat, Pig
Host:	Rabbit
Clonality:	Polyclonal
Conjugate:	This NOL4 antibody is un-conjugated
Application:	Western Blotting (WB), Immunohistochemistry (IHC), Immunohistochemistry (Paraffin-embedded Sections) (IHC (p))

## Product Details

Immunogen:	Synthetic peptide located between aa239-288 of human NOL4 (O94818-2). Percent identity by BLAST analysis: Human, Chimpanzee, Gorilla, Gibbon, Monkey (100%), Galago, Marmoset, Elephant, Panda, Dog, Bovine, Rabbit, Horse, Guinea pig, Turkey, Platypus, Xenopus (92%), Zebra finch (86%), Mouse, Bat, Pig (85%), Orangutan, Rat (84%), Chicken (80%).  Type of Immunogen: Synthetic peptide
Isotype:	IgG
Specificity:	Human NOL4
Predicted Reactivity:	Percent identity by BLAST analysis: Human (100%) Dog, Bovine, Rabbit, Horse (92%) Mouse, Pig (85%) Chicken (80%).

## Product Details

Purification: Immunoaffinity purified

## Target Details

Target: NOL4

Alternative Name: NOL4 ([NOL4 Products](#))

Background: Name/Gene ID: NOL4

Synonyms: NOL4, Cancer/testis antigen 125, CT125, HRIHFB2255, Nucleolar-localized protein, NOLP, Nucleolar localized protein, Nucleolar protein 4

Gene ID: 8715

UniProt: [O94818](#)

## Application Details

Application Notes: Approved: IHC, IHC-P, WB (0.2 - 1 µg/mL)

Comment: Target Species of Antibody: Human

Restrictions: For Research Use only

## Handling

Format: Lyophilized

Reconstitution: After adding water, will consist of PBS buffer with 2 % sucrose

Concentration: Lot specific

Buffer: Lyophilized from PBS with 2 % sucrose

Handling Advice: Avoid repeat freeze-thaw cycles.

Storage: 4 °C, -20 °C

Storage Comment: Long term: -20°C, the use of 50% glycerol is recommended if storing aliquots in -20°C for long term use (up to 1 year)

Short term (less than 1 week): 4°C. Avoid freeze-thaw cycles.

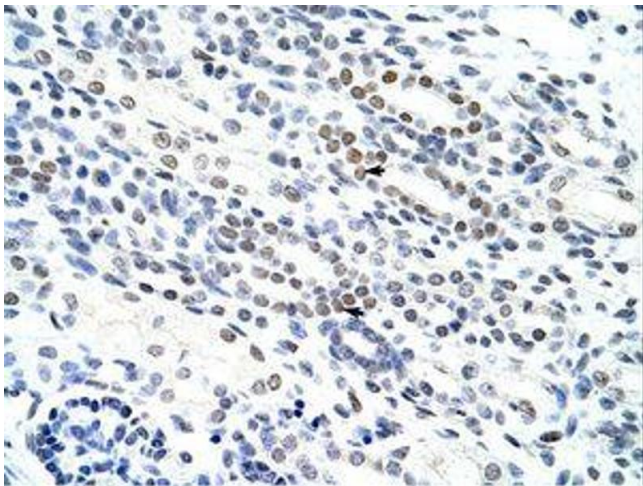


Image 1.

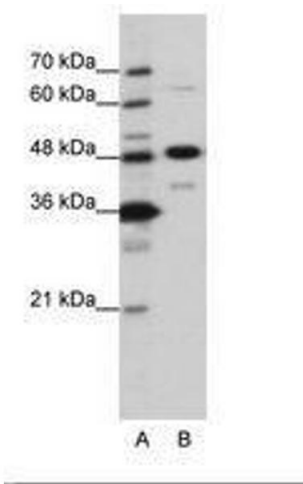


Image 2.