



[Go to Product page](#)

Datasheet for ABIN6736206
anti-EIF3B antibody (C-Term)

1 Image

Overview

Quantity:	100 µL
Target:	EIF3B
Binding Specificity:	C-Term
Reactivity:	Human, Mouse, Rat, Horse, Rabbit, Zebrafish (Danio rerio), Dog, Guinea Pig, Monkey, Bat, Chicken, Pig
Host:	Rabbit
Clonality:	Polyclonal
Conjugate:	This EIF3B antibody is un-conjugated
Application:	Western Blotting (WB)

Product Details

Immunogen:	Synthetic peptide from C-Terminus of human EIF3B (P55884, NP_003742). Percent identity by BLAST analysis: Human, Chimpanzee, Gorilla, Gibbon, Monkey, Galago, Marmoset, Mouse, Rat, Elephant, Panda, Dog, Bat, Rabbit, Horse, Pig, Opossum, Guinea pig, Turkey, Zebra finch, Chicken, Platypus, Zebrafish (100%), Bovine (92%), Xenopus, Stickleback (91%). Type of Immunogen: Synthetic peptide
Isotype:	IgG
Specificity:	Human EIF3B
Predicted Reactivity:	Percent identity by BLAST analysis: Human (100%).
Purification:	Immunoaffinity purified

Target Details

Target:	EIF3B
Alternative Name:	EIF3B (EIF3B Products)
Background:	Name/Gene ID: EIF3B Synonyms: EIF3B, EIF3-P116, EIF-3-eta, EIF3 p110, EIF3 p116, EIF3S9, Prt1 homolog, EIF3-ETA, EIF3-P110, PRT1
Gene ID:	8662
NCBI Accession:	NP_003742
UniProt:	P55884
Pathways:	Ribonucleoprotein Complex Subunit Organization

Application Details

Application Notes:	Approved: WB (0.2 - 1 µg/mL)
Comment:	Target Species of Antibody: Human
Restrictions:	For Research Use only

Handling

Format:	Lyophilized
Reconstitution:	After adding water, will consist of PBS buffer with 2 % sucrose
Concentration:	Lot specific
Buffer:	Lyophilized from PBS with 2 % sucrose
Handling Advice:	Avoid repeat freeze-thaw cycles.
Storage:	4 °C,-20 °C
Storage Comment:	Long term: -20°C, the use of 50% glycerol is recommended if storing aliquots in -20°C for long term use (up to 1 year) Short term (less than 1 week): 4°C. Avoid freeze-thaw cycles.

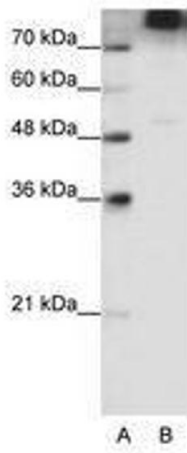


Image 1.