



Datasheet for ABIN6736213
anti-OLA1 antibody (AA 104-153)



[Go to Product page](#)

2 Images

Overview

Quantity:	100 µL
Target:	OLA1
Binding Specificity:	AA 104-153
Reactivity:	Human, Mouse, Rat, Dog, Cow, Rabbit, Guinea Pig, Horse, Monkey, Pig, Chicken
Host:	Rabbit
Clonality:	Polyclonal
Conjugate:	This OLA1 antibody is un-conjugated
Application:	Western Blotting (WB), Immunohistochemistry (IHC), Immunohistochemistry (Paraffin-embedded Sections) (IHC (p))

Product Details

Immunogen:	Synthetic peptide located between aa104-153 of human OLA1 (Q9NTK5, NP_037473). Percent identity by BLAST analysis: Human, Chimpanzee, Gorilla, Orangutan, Monkey, Galago, Marmoset, Mouse, Rat, Elephant, Dog, Bovine, Rabbit, Horse, Pig, Guinea pig, Turkey, Zebra finch, Chicken (100%), Opossum, Platypus, Xenopus, Smelt (85%), Salmon, Zebrafish, Nematode (84%). Type of Immunogen: Synthetic peptide
Isotype:	IgG
Specificity:	Human OLA1 / GTPBP9
Predicted Reactivity:	Percent identity by BLAST analysis: Human, Orangutan, Mouse, Rat, Bovine, Chicken (100%)

Product Details

Beetle (92%).

Purification: Immunoaffinity purified

Target Details

Target: OLA1

Alternative Name: OLA1 ([OLA1 Products](#))

Background: Name/Gene ID: OLA1

Synonyms: OLA1, DOC45, GTBP9, GTPBP9, GBP45, GTP-binding protein PTD004, Homologous yeast-44.2 protein, GTP-binding protein 9, Obg-like ATPase 1, PTD004

Gene ID: 29789

NCBI Accession: [NP_037473](#)

UniProt: [Q9NTK5](#)

Application Details

Application Notes: Approved: IHC, IHC-P, WB (0.2 - 1 µg/mL)

Comment: Target Species of Antibody: Human

Restrictions: For Research Use only

Handling

Format: Lyophilized

Reconstitution: After adding water, will consist of PBS buffer with 2 % sucrose

Concentration: Lot specific

Buffer: Lyophilized from PBS with 2 % sucrose

Handling Advice: Avoid repeat freeze-thaw cycles.

Storage: 4 °C, -20 °C

Storage Comment: Long term: -20°C, the use of 50% glycerol is recommended if storing aliquots in -20°C for long term use (up to 1 year)

Short term (less than 1 week): 4°C. Avoid freeze-thaw cycles.

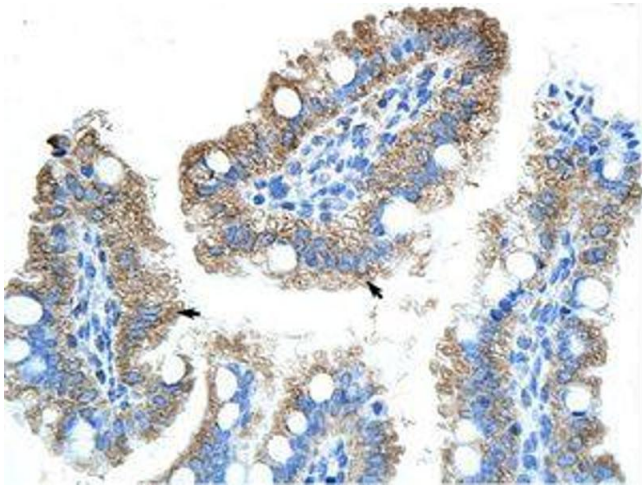


Image 1.

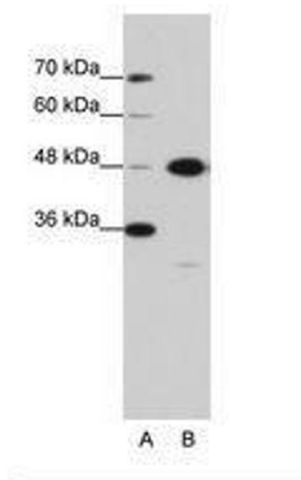


Image 2.