



[Go to Product page](#)

Datasheet for ABIN6736217
anti-CPEB2 antibody (AA 204-253)

1 Image

Overview

Quantity:	100 µL
Target:	CPEB2
Binding Specificity:	AA 204-253
Reactivity:	Human, Mouse, Rat, Guinea Pig, Dog, Cow, Horse, Rabbit, Monkey, Pig, Bat
Host:	Rabbit
Clonality:	Polyclonal
Conjugate:	This CPEB2 antibody is un-conjugated
Application:	Western Blotting (WB)

Product Details

Immunogen:	Synthetic peptide located between aa204-253 of human CPEB2 (Q7Z5Q1). Percent identity by BLAST analysis: Human, Chimpanzee, Gorilla, Gibbon, Monkey, Galago, Marmoset, Mouse, Rat, Elephant, Dog, Bovine, Bat, Rabbit, Horse, Pig, Opossum, Guinea pig (100%). Type of Immunogen: Synthetic peptide
Isotype:	IgG
Specificity:	Human CPEB2
Predicted Reactivity:	Percent identity by BLAST analysis: Human, Mouse, Rat, Dog, Bovine, Rabbit, Horse, Pig, Guinea pig (100%).
Purification:	Immunoaffinity purified

Target Details

Target: CPEB2

Alternative Name: CPEB2 ([CPEB2 Products](#))

Background: Name/Gene ID: CPEB2

Synonyms: CPEB2, CPE-BP2, CPEB-2, CPE-binding protein 2, HCPEB-2

Gene ID: 132864

Application Details

Application Notes: Approved: WB (0.2 - 1 µg/mL)

Comment: Target Species of Antibody: Human

Restrictions: For Research Use only

Handling

Format: Lyophilized

Reconstitution: After adding water, will consist of PBS buffer with 2 % sucrose

Concentration: Lot specific

Buffer: Lyophilized from PBS with 2 % sucrose

Handling Advice: Avoid repeat freeze-thaw cycles.

Storage: 4 °C, -20 °C

Storage Comment: Long term: -20°C, the use of 50% glycerol is recommended if storing aliquots in -20°C for long term use (up to 1 year)

Short term (less than 1 week): 4°C. Avoid freeze-thaw cycles.

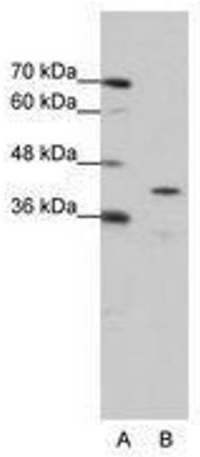


Image 1.