



[Go to Product page](#)

Datasheet for ABIN6736218
anti-NKD2 antibody (AA 43-92)

1 Image

Overview

Quantity:	100 µL
Target:	NKD2
Binding Specificity:	AA 43-92
Reactivity:	Human, Rat
Host:	Rabbit
Clonality:	Polyclonal
Conjugate:	This NKD2 antibody is un-conjugated
Application:	Western Blotting (WB)

Product Details

Immunogen:	Synthetic peptide located between aa43-92 of human NKD2 (Q96EK8). Percent identity by BLAST analysis: Human, Gorilla, Rat (100%), Mouse (92%), Monkey (90%). Type of Immunogen: Synthetic peptide
Isotype:	IgG
Specificity:	Human NKD2
Predicted Reactivity:	Percent identity by BLAST analysis: Human, Rat (100%) Mouse (92%).
Purification:	Immunoaffinity purified

Target Details

Target:	NKD2
---------	------

Target Details

Alternative Name: [NKD2 \(NKD2 Products\)](#)

Background: Name/Gene ID: NKD2

Synonyms: NKD2, DVI-binding protein NKD2, Naked-2, Naked2, HNkd2

Gene ID: 85409

UniProt: [Q969F2](#)

Application Details

Application Notes: Approved: WB (0.2 - 1 µg/mL)

Comment: Target Species of Antibody: Human

Restrictions: For Research Use only

Handling

Format: Lyophilized

Reconstitution: After adding water, will consist of PBS buffer with 2 % sucrose

Concentration: Lot specific

Buffer: Lyophilized from PBS with 2 % sucrose

Handling Advice: Avoid repeat freeze-thaw cycles.

Storage: 4 °C, -20 °C

Storage Comment: Long term: -20°C, the use of 50% glycerol is recommended if storing aliquots in -20°C for long term use (up to 1 year)

Short term (less than 1 week): 4°C. Avoid freeze-thaw cycles.

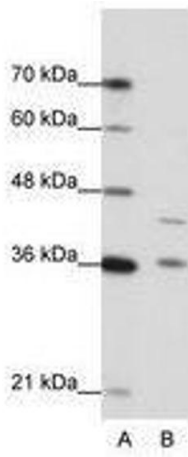


Image 1.