

Datasheet for ABIN6736223  
**anti-FZD7 antibody (C-Term)**

## 2 Images

[Go to Product page](#)

## Overview

Quantity:	100 µL
Target:	FZD7
Binding Specificity:	C-Term
Reactivity:	Human, Mouse, Rat, Dog, Cow, Rabbit, Bat, Pig, Monkey
Host:	Rabbit
Clonality:	Polyclonal
Conjugate:	This FZD7 antibody is un-conjugated
Application:	Western Blotting (WB), Immunohistochemistry (IHC), Immunohistochemistry (Paraffin-embedded Sections) (IHC (p))

## Product Details

Immunogen:	Synthetic peptide from C-Terminus of human FZD7 (O75084, NP_003498). Percent identity by BLAST analysis: Human, Chimpanzee, Gorilla, Gibbon, Monkey, Galago, Marmoset, Mouse, Rat, Elephant, Dog, Bovine, Bat, Rabbit, Pig, Opossum (100%), Guinea pig, Platypus (92%), Zebra finch, Chicken, Xenopus (85%).  Type of Immunogen: Synthetic peptide
Isotype:	IgG
Specificity:	Human FZD7 / Frizzled 7
Predicted Reactivity:	Percent identity by BLAST analysis: Human, Mouse, Dog, Bovine, Rabbit (100%) Guinea pig (92%) Chicken, Xenopus (85%).

## Product Details

Purification: Immunoaffinity purified

## Target Details

Target: FZD7

Alternative Name: FZD7 / Frizzled 7 ([FZD7 Products](#))

Background: Name/Gene ID: FZD7

Subfamily: Frizzled

Family: GPCR

Synonyms: FZD7, Frizzled family receptor 7, Frizzled homolog 7, Frizzled 7, Frizzled-7, FzE3, Fz-7, HFz7

Gene ID: 8324

NCBI Accession: [NP\\_003498](#)

UniProt: [O75084](#)

Pathways: [WNT Signaling](#), [Stem Cell Maintenance](#)

## Application Details

Application Notes: Approved: IHC, IHC-P, WB (0.2 - 1 µg/mL)

Comment: Target Species of Antibody: Human

Restrictions: For Research Use only

## Handling

Format: Lyophilized

Reconstitution: Distilled water

Concentration: Lot specific

Buffer: Lyophilized from PBS with 2 % sucrose

Handling Advice: Avoid repeat freeze-thaw cycles.

Storage: 4 °C, -20 °C

Storage Comment: Long term: -20°C, the use of 50% glycerol is recommended if storing aliquots in -20°C for long term use (up to 1 year)

Handling

Short term (less than 1 week): 4°C. Avoid freeze-thaw cycles.

Images

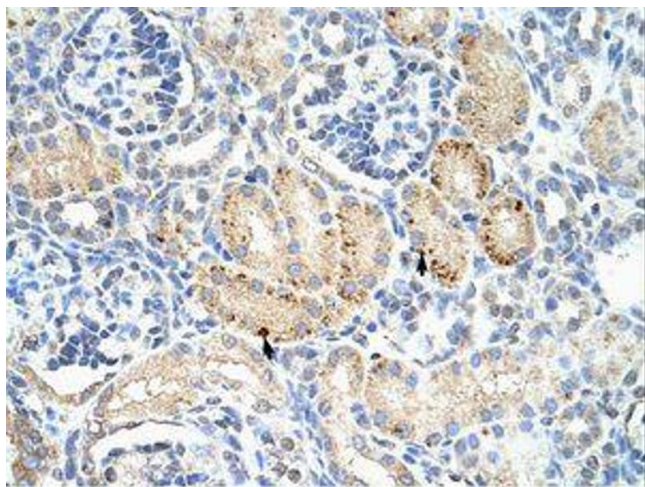


Image 1.

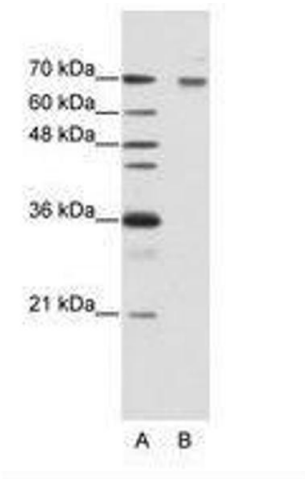


Image 2.