



[Go to Product page](#)

Datasheet for ABIN6736224
anti-JunB antibody (AA 271-320)

1 Image

Overview

Quantity:	100 µL
Target:	JunB (JUNB)
Binding Specificity:	AA 271-320
Reactivity:	Human, Mouse, Rat, Cow, Dog, Horse, Sheep, Monkey, Guinea Pig, Bat, Zebrafish (Danio rerio), Pig
Host:	Rabbit
Clonality:	Polyclonal
Conjugate:	This JunB antibody is un-conjugated
Application:	Western Blotting (WB)

Product Details

Immunogen:	Synthetic peptide located between aa271-320 of human JUNB (P17275, NP_002220). Percent identity by BLAST analysis: Human, Chimpanzee, Monkey, Galago, Mouse, Rat, Sheep, Elephant, Dog, Bovine, Bat, Horse, Pig, Guinea pig (100%), Opossum, Lizard (92%), Platypus (85%), Gorilla, Gibbon, Panda, Rabbit, Turkey, Zebra finch, Chicken, Xenopus, Pufferfish, Zebrafish (84%). Type of Immunogen: Synthetic peptide
Isotype:	IgG
Specificity:	Human JUNB
Predicted Reactivity:	Percent identity by BLAST analysis: Human, Mouse, Rat, Sheep, Dog, Bovine, Guinea pig (100%).
Purification:	Immunoaffinity purified

Target Details

Target:	JunB (JUNB)
Alternative Name:	JUNB / JUN-B (JUNB Products)
Background:	Name/Gene ID: JUNB Synonyms: JUNB, Activator protein 1, AP-1, Jun B proto-oncogene, G0s3, Transcription factor jun-B
Gene ID:	3726
NCBI Accession:	NP_002220
UniProt:	P17275

Application Details

Application Notes:	Approved: WB (0.2 - 1 µg/mL)
Comment:	Target Species of Antibody: Human
Restrictions:	For Research Use only

Handling

Format:	Lyophilized
Reconstitution:	After adding water, will consist of PBS buffer with 2 % sucrose
Concentration:	Lot specific
Buffer:	Lyophilized from PBS with 2 % sucrose
Handling Advice:	Avoid repeat freeze-thaw cycles.
Storage:	4 °C, -20 °C
Storage Comment:	Long term: -20°C, the use of 50% glycerol is recommended if storing aliquots in -20°C for long term use (up to 1 year) Short term (less than 1 week): 4°C. Avoid freeze-thaw cycles.

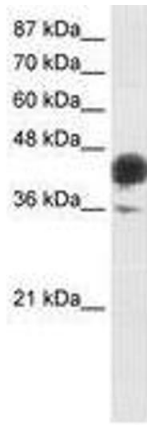


Image 1.