

Datasheet for ABIN6736226  
**anti-CARS antibody (AA 661-710)**

## 2 Images

[Go to Product page](#)

## Overview

Quantity:	100 µL
Target:	CARS
Binding Specificity:	AA 661-710
Reactivity:	Human, Rabbit, Cow, Pig, Monkey
Host:	Rabbit
Clonality:	Polyclonal
Conjugate:	This CARS antibody is un-conjugated
Application:	Western Blotting (WB), Immunohistochemistry (IHC), Immunohistochemistry (Paraffin-embedded Sections) (IHC (p))

## Product Details

Immunogen:	Synthetic peptide located between aa661-710 of human CARS. Percent identity by BLAST analysis: Human, Chimpanzee, Gorilla, Monkey, Galago, Rabbit (100%), Mouse, Rat, Elephant, Dog, Horse, Opossum, Turkey, Chicken, Lizard, Stickleback, Zebrafish (92%), Pig, Zebra finch, Xenopus, Salmon (84%), Hamster (81%).  Type of Immunogen: Synthetic peptide
Isotype:	IgG
Specificity:	Human CARS
Predicted Reactivity:	Percent identity by BLAST analysis: Human, Rabbit (100%) Mouse, Rat, Dog, Chicken, Zebrafish (92%) Pig (84%).

## Product Details

Purification: Immunoaffinity purified

## Target Details

Target: CARS

Alternative Name: CARS1 / CARS ([CARS Products](#))

Background: Name/Gene ID: CARS

Synonyms: CARS, Cysteinyl-tRNA synthetase, CYSRS, Cysteine translase, CARS1, MGC:11246

Gene ID: 833

UniProt: [P49589](#)

## Application Details

Application Notes: Approved: IHC, IHC-P, WB (0.2 - 1 µg/mL)

Comment: Target Species of Antibody: Human

Restrictions: For Research Use only

## Handling

Format: Lyophilized

Reconstitution: After adding water, will consist of PBS buffer with 2 % sucrose

Concentration: Lot specific

Buffer: Lyophilized from PBS with 2 % sucrose

Handling Advice: Avoid repeat freeze-thaw cycles.

Storage: 4 °C, -20 °C

Storage Comment: Long term: -20°C, the use of 50% glycerol is recommended if storing aliquots in -20°C for long term use (up to 1 year)  
Short term (less than 1 week): 4°C. Avoid freeze-thaw cycles.

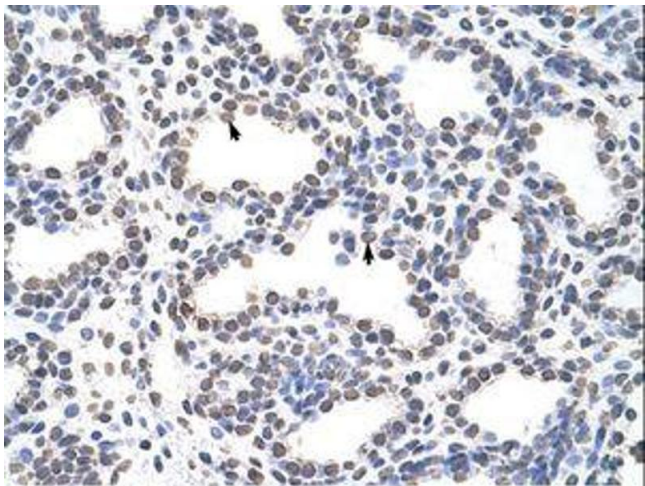


Image 1.

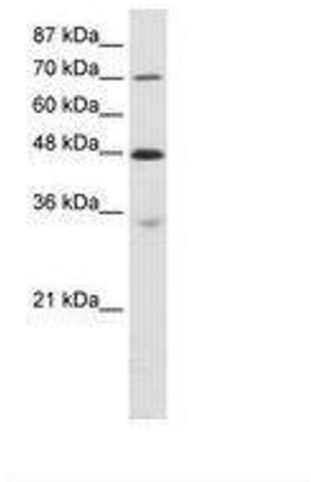


Image 2.