



[Go to Product page](#)

Datasheet for ABIN6736234
anti-NOC4L antibody (AA 401-450)

2 Images

Overview

Quantity:	100 µL
Target:	NOC4L
Binding Specificity:	AA 401-450
Reactivity:	Human, Rat, Mouse
Host:	Rabbit
Clonality:	Polyclonal
Conjugate:	This NOC4L antibody is un-conjugated
Application:	Western Blotting (WB), Immunohistochemistry (IHC), Immunohistochemistry (Paraffin-embedded Sections) (IHC (p))

Product Details

Immunogen:	Synthetic peptide located between aa401-450 of human NOC4L (Q9BVI4, NP_076983). Percent identity by BLAST analysis: Human, Chimpanzee, Gorilla, Gibbon (100%), Monkey, Bovine, Bat, Horse, Pig (92%), Galago, Marmoset (85%), Elephant (84%), Mouse, Rat (78%). Type of Immunogen: Synthetic peptide
Isotype:	IgG
Specificity:	Human NOC4L
Predicted Reactivity:	Percent identity by BLAST analysis: Human (100%) Bovine, Horse, Pig (92%).
Purification:	Immunoaffinity purified

Target Details

Target:	NOC4L
Alternative Name:	NOC4L (NOC4L Products)
Background:	Name/Gene ID: NOC4L Synonyms: NOC4L, NOC4, NOC4 protein homolog, NOC4-like protein, UTP19, NET49
Gene ID:	79050
NCBI Accession:	NP_076983
UniProt:	Q9BVI4

Application Details

Application Notes:	Approved: IHC, IHC-P, WB (0.2 - 1 µg/mL)
Comment:	Target Species of Antibody: Human
Restrictions:	For Research Use only

Handling

Format:	Lyophilized
Reconstitution:	After adding water, will consist of PBS buffer with 2 % sucrose
Concentration:	Lot specific
Buffer:	Lyophilized from PBS with 2 % sucrose
Handling Advice:	Avoid repeat freeze-thaw cycles.
Storage:	4 °C, -20 °C
Storage Comment:	Long term: -20°C, the use of 50% glycerol is recommended if storing aliquots in -20°C for long term use (up to 1 year) Short term (less than 1 week): 4°C. Avoid freeze-thaw cycles.

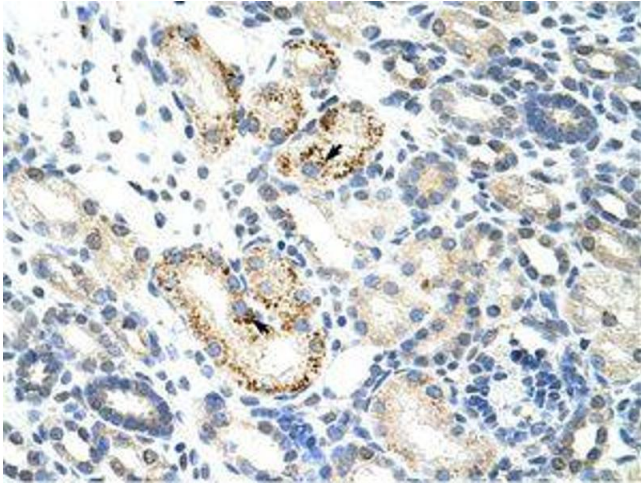


Image 1.



Image 2.