



Datasheet for ABIN6736236
anti-EXOSC3 antibody (AA 81-130)



[Go to Product page](#)

2 Images

Overview

Quantity:	100 µL
Target:	EXOSC3
Binding Specificity:	AA 81-130
Reactivity:	Human, Mouse, Dog, Rabbit, Cow, Guinea Pig, Horse, Pig, Monkey, Chicken, Xenopus laevis
Host:	Rabbit
Clonality:	Polyclonal
Conjugate:	This EXOSC3 antibody is un-conjugated
Application:	Western Blotting (WB), Immunohistochemistry (IHC), Immunohistochemistry (Paraffin-embedded Sections) (IHC (p))

Product Details

Immunogen:	Synthetic peptide located between aa81-130 of human EXOSC3 (Q9NQT5, NP_057126). Percent identity by BLAST analysis: Human, Chimpanzee, Gorilla, Gibbon, Monkey, Galago, Marmoset, Mouse, Elephant, Panda, Dog, Bovine, Rabbit, Horse, Pig, Opossum, Guinea pig, Turkey, Zebra finch, Chicken, Xenopus (100%), Platypus (92%). Type of Immunogen: Synthetic peptide
Isotype:	IgG
Specificity:	Human EXOSC3
Predicted Reactivity:	Percent identity by BLAST analysis: Human, Mouse, Dog, Horse, Pig, Guinea pig, Chicken, Xenopus (100%).

Product Details

Purification: Immunoaffinity purified

Target Details

Target: EXOSC3

Alternative Name: EXOSC3 / p10 ([EXOSC3 Products](#))

Background: Name/Gene ID: EXOSC3

Synonyms: EXOSC3, BA3J10.7, p10, PCH1B, RP11-3J10.8, Rrp40p, CGI-102, Exosome component 3, HRrp-40, HRrp40p, RRP40

Gene ID: 51010

NCBI Accession: [NP_057126](#)

UniProt: [Q9NQT5](#)

Pathways: [Regulation of Leukocyte Mediated Immunity](#), [Positive Regulation of Immune Effector Process](#), [Production of Molecular Mediator of Immune Response](#), [SARS-CoV-2 Protein Interactome](#)

Application Details

Application Notes: Approved: IHC, IHC-P, WB (0.2 - 1 µg/mL)

Comment: Target Species of Antibody: Human

Restrictions: For Research Use only

Handling

Format: Lyophilized

Reconstitution: After adding water, will consist of PBS buffer with 2 % sucrose

Concentration: Lot specific

Buffer: Lyophilized from PBS with 2 % sucrose

Handling Advice: Avoid repeat freeze-thaw cycles.

Storage: 4 °C,-20 °C

Storage Comment: Long term: -20°C, the use of 50% glycerol is recommended if storing aliquots in -20°C for long term use (up to 1 year)
Short term (less than 1 week): 4°C. Avoid freeze-thaw cycles.

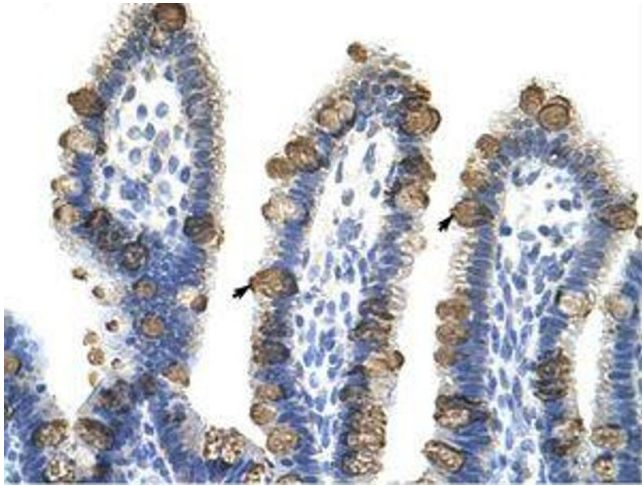


Image 1.

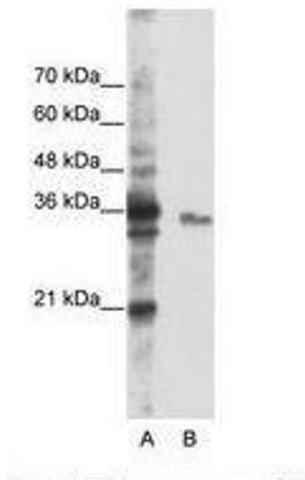


Image 2.