



[Go to Product page](#)

Datasheet for ABIN6736241
anti-OLA1 antibody (C-Term)

1 Image

Overview

Quantity:	100 µL
Target:	OLA1
Binding Specificity:	C-Term
Reactivity:	Human, Mouse, Rat, Dog, Cow, Rabbit, Guinea Pig, Horse, Zebrafish (Danio rerio), Monkey, Pig, Chicken, Drosophila melanogaster, Xenopus laevis, Bat
Host:	Rabbit
Clonality:	Polyclonal
Conjugate:	This OLA1 antibody is un-conjugated
Application:	Western Blotting (WB)

Product Details

Immunogen:	Synthetic peptide from C-Terminus of human OLA1 (Q9NTK5, NP_037473). Percent identity by BLAST analysis: Human, Chimpanzee, Gorilla, Orangutan, Gibbon, Monkey, Galago, Marmoset, Mouse, Rat, Elephant, Dog, Bovine, Bat, Rabbit, Horse, Pig, Opossum, Guinea pig, Turkey, Zebra finch, Chicken, Platypus, Xenopus, Zebrafish, Drosophila (100%), Salmon (92%), Smelt (85%). Type of Immunogen: Synthetic peptide
Specificity:	Human OLA1 / GTPBP9
Predicted Reactivity:	Percent identity by BLAST analysis: Human, Orangutan, Marmoset, Mouse, Rat, Bovine, Chicken, Xenopus, Pufferfish, Zebrafish, Eye worm, Drosophila, Mosquito, Beetle, Nematode, Trichoplax (100%) Salmon, Tick (92%) Smelt (85%).

Product Details

Purification: Immunoaffinity purified

Target Details

Target: OLA1

Alternative Name: OLA1 ([OLA1 Products](#))

Background: Name/Gene ID: OLA1

Synonyms: OLA1, DOC45, GTBP9, GTPBP9, GBP45, GTP-binding protein PTD004, Homologous yeast-44.2 protein, GTP-binding protein 9, Obg-like ATPase 1, PTD004

Gene ID: 29789

NCBI Accession: [NP_037473](#)

UniProt: [Q9NTK5](#)

Application Details

Application Notes: Approved: WB (0.2 - 1 µg/mL)

Comment: Target Species of Antibody: Human

Restrictions: For Research Use only

Handling

Format: Lyophilized

Reconstitution: After adding water, will consist of PBS buffer with 2 % sucrose

Concentration: Lot specific

Buffer: Lyophilized from PBS with 2 % sucrose

Handling Advice: Avoid repeat freeze-thaw cycles.

Storage: 4 °C, -20 °C

Storage Comment: Long term: -20°C, the use of 50% glycerol is recommended if storing aliquots in -20°C for long term use (up to 1 year)

Short term (less than 1 week): 4°C. Avoid freeze-thaw cycles.

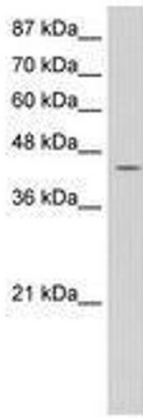


Image 1.