



[Go to Product page](#)

Datasheet for ABIN6736257
anti-ZSCAN2 antibody (AA 31-80)

1 Image

Overview

Quantity:	100 µL
Target:	ZSCAN2
Binding Specificity:	AA 31-80
Reactivity:	Human, Mouse, Dog, Cow, Monkey
Host:	Rabbit
Clonality:	Polyclonal
Conjugate:	This ZSCAN2 antibody is un-conjugated
Application:	Western Blotting (WB)

Product Details

Immunogen:	Synthetic peptide located between aa31-80 of human ZSCAN2 (Q7Z7L9, NP_870992). Percent identity by BLAST analysis: Human, Chimpanzee, Gorilla, Orangutan, Gibbon, Monkey, Marmoset, Mouse, Panda, Dog (100%), Galago, Elephant (92%), Bovine (85%). Type of Immunogen: Synthetic peptide
Isotype:	IgG
Specificity:	Human ZSCAN2
Predicted Reactivity:	Percent identity by BLAST analysis: Human, Mouse, Dog (100%) Bovine (85%).
Purification:	Immunoaffinity purified

Target Details

Target:	ZSCAN2
Alternative Name:	ZSCAN2 (ZSCAN2 Products)
Background:	Name/Gene ID: ZSCAN2 Synonyms: ZSCAN2, Zfp-29, Zinc finger protein 29, ZNF854, ZFP29, Zinc finger protein 29 homolog, Zinc finger protein 854
Gene ID:	54993
NCBI Accession:	NP_870992
UniProt:	Q7Z7L9

Application Details

Application Notes:	Approved: WB (0.2 - 1 µg/mL)
Comment:	Target Species of Antibody: Human
Restrictions:	For Research Use only

Handling

Format:	Lyophilized
Reconstitution:	After adding water, will consist of PBS buffer with 2 % sucrose
Concentration:	Lot specific
Buffer:	Lyophilized from PBS with 2 % sucrose
Handling Advice:	Avoid repeat freeze-thaw cycles.
Storage:	4 °C, -20 °C
Storage Comment:	Long term: -20°C, the use of 50% glycerol is recommended if storing aliquots in -20°C for long term use (up to 1 year) Short term (less than 1 week): 4°C. Avoid freeze-thaw cycles.

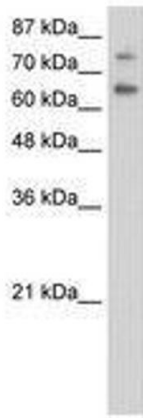


Image 1.