



[Go to Product page](#)

Datasheet for ABIN6736272
anti-E2F5 antibody (AA 134-183)

1 Image

Overview

Quantity:	100 µL
Target:	E2F5
Binding Specificity:	AA 134-183
Reactivity:	Human, Mouse, Rat, Dog, Guinea Pig, Horse, Zebrafish (Danio rerio), Rabbit, Pig, Monkey
Host:	Rabbit
Clonality:	Polyclonal
Conjugate:	This E2F5 antibody is un-conjugated
Application:	Western Blotting (WB)

Product Details

Immunogen:	Synthetic peptide located between aa134-183 of human E2F5 (Q15329, NP_001942). Percent identity by BLAST analysis: Human, Gorilla, Gibbon, Monkey, Galago, Mouse, Rat, Elephant, Panda, Dog, Rabbit, Horse, Pig, Opossum, Guinea pig (100%), Bat, Turkey, Zebra finch, Chicken, Platypus, Lizard, Xenopus (92%), Zebrafish (84%). Type of Immunogen: Synthetic peptide
Isotype:	IgG
Specificity:	Human E2F5
Predicted Reactivity:	Percent identity by BLAST analysis: Human, Mouse, Rat, Dog, Rabbit, Pig, Guinea pig (100%) Chicken (92%) Zebrafish (84%).
Purification:	Immunoaffinity purified

Target Details

Target:	E2F5
Alternative Name:	E2F5 (E2F5 Products)
Background:	Name/Gene ID: E2F5 Synonyms: E2F5, Transcription factor E2F5, E2F-5
Gene ID:	1875
NCBI Accession:	NP_001942
UniProt:	Q15329

Application Details

Application Notes:	Approved: WB (0.2 - 1 µg/mL)
Comment:	Target Species of Antibody: Human
Restrictions:	For Research Use only

Handling

Format:	Lyophilized
Reconstitution:	After adding water, will consist of PBS buffer with 2 % sucrose
Concentration:	Lot specific
Buffer:	Lyophilized.
Handling Advice:	Avoid repeat freeze-thaw cycles.
Storage:	4 °C, -20 °C
Storage Comment:	Long term: -20°C, the use of 50% glycerol is recommended if storing aliquots in -20°C for long term use (up to 1 year) Short term (less than 1 week): 4°C. Avoid freeze-thaw cycles.

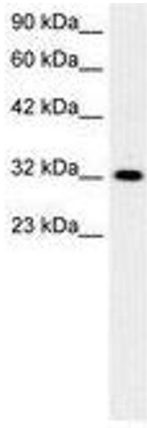


Image 1.