

Datasheet for ABIN6736284  
**anti-PTBP1 antibody (N-Term)**



[Go to Product page](#)

1 Image

## Overview

Quantity:	100 µL
Target:	PTBP1
Binding Specificity:	N-Term
Reactivity:	Human, Mouse, Cow, Guinea Pig, Horse, Monkey, Xenopus laevis, Chicken
Host:	Rabbit
Clonality:	Polyclonal
Conjugate:	This PTBP1 antibody is un-conjugated
Application:	Western Blotting (WB)

## Product Details

Immunogen:	Synthetic peptide from N-Terminus of human PTBP1 (P26599, NP_114368). Percent identity by BLAST analysis: Human, Chimpanzee, Gorilla, Gibbon, Monkey, Marmoset, Mouse, Bovine, Horse, Guinea pig, Turkey, Chicken, Xenopus (100%), Galago, Rat, Elephant, Dog, Bat, Pig, Opossum, Zebra finch, Platypus, Zebrafish (92%), Rabbit (90%), Lizard, Salmon (85%).  Type of Immunogen: Synthetic peptide
Isotype:	IgG
Specificity:	Human PTBP1
Predicted Reactivity:	Percent identity by BLAST analysis: Human, Mouse, Bovine, Horse, Chicken, Xenopus (100%) Rat, Dog, Pig, Guinea pig, Zebrafish (92%).
Purification:	Immunoaffinity purified

## Target Details

---

Target:	PTBP1
Alternative Name:	PTBP1 ( <a href="#">PTBP1 Products</a> )
Background:	Name/Gene ID: PTBP1  Synonyms: PTBP1, HnRNP I, HNRNPI, HNRPI, PTB, PPTB, PTB2, PTB4, RNA-binding protein, HNRNP-I, PTB-1, PTB-T, PTB3
Gene ID:	5725
NCBI Accession:	<a href="#">NP_114368</a>
UniProt:	<a href="#">P26599</a>
Pathways:	<a href="#">Regulation of Muscle Cell Differentiation</a>

## Application Details

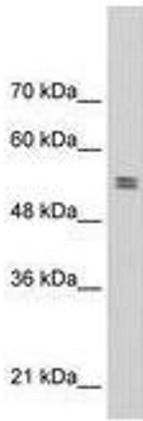
---

Application Notes:	Approved: WB (0.2 - 1 µg/mL)
Comment:	Target Species of Antibody: Human
Restrictions:	For Research Use only

## Handling

---

Format:	Lyophilized
Reconstitution:	After adding water, will consist of PBS buffer with 2 % sucrose
Concentration:	Lot specific
Buffer:	Lyophilized from PBS with 2 % sucrose
Handling Advice:	Avoid repeat freeze-thaw cycles.
Storage:	4 °C,-20 °C
Storage Comment:	Long term: -20°C, the use of 50% glycerol is recommended if storing aliquots in -20°C for long term use (up to 1 year)  Short term (less than 1 week): 4°C. Avoid freeze-thaw cycles.



**Image 1.**