



[Go to Product page](#)

Datasheet for ABIN6736286  
**anti-FIP1L1 antibody (AA 509-558)**

1 Image

Overview

Quantity:	100 µL
Target:	FIP1L1
Binding Specificity:	AA 509-558
Reactivity:	Human, Mouse, Rat, Cow, Horse, Dog, Pig, Guinea Pig, Zebrafish (Danio rerio), Bat, Monkey
Host:	Rabbit
Clonality:	Polyclonal
Conjugate:	This FIP1L1 antibody is un-conjugated
Application:	Western Blotting (WB)

Product Details

Immunogen:	Synthetic peptide located between aa509-558 of human FIP1L1 (Q6UN15, NP_112179). Percent identity by BLAST analysis: Human, Chimpanzee, Gorilla, Orangutan, Gibbon, Monkey, Galago, Marmoset, Mouse, Rat, Elephant, Dog, Bovine, Bat, Horse, Pig, Opossum, Guinea pig, Zebra finch, Lizard (100%), Rabbit, Chicken (92%), Turkey, Xenopus, Stickleback, Zebrafish (85%).  Type of Immunogen: Synthetic peptide
Isotype:	IgG
Specificity:	Human FIP1L1
Predicted Reactivity:	Percent identity by BLAST analysis: Human, Mouse, Rat, Dog, Bovine, Horse, Pig, Guinea pig (100%) Rabbit, Chicken (92%) Zebrafish (85%) Xenopus (80%).

## Product Details

---

Purification: Immunoaffinity purified

## Target Details

---

Target: FIP1L1

Alternative Name: HFip1 / FIP1L1 ([FIP1L1 Products](#))

Background: Name/Gene ID: FIP1L1

Synonyms: FIP1L1, Factor interacting with PAP, FIP1-like 1 protein, FIP1, FIP1 like 1 (S. cerevisiae), HFip1, RHE

Gene ID: 81608

NCBI Accession: [NP\\_112179](#)

UniProt: [Q6UN15](#)

## Application Details

---

Application Notes: Approved: WB (0.2 - 1 µg/mL)

Comment: Target Species of Antibody: Human

Restrictions: For Research Use only

## Handling

---

Format: Lyophilized

Reconstitution: After adding water, will consist of PBS buffer with 2 % sucrose

Concentration: Lot specific

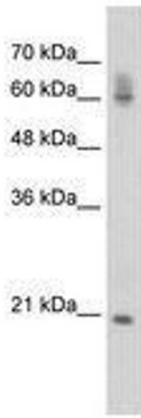
Buffer: Lyophilized from PBS with 2 % sucrose

Handling Advice: Avoid repeat freeze-thaw cycles.

Storage: 4 °C, -20 °C

Storage Comment: Long term: -20°C, the use of 50% glycerol is recommended if storing aliquots in -20°C for long term use (up to 1 year)

Short term (less than 1 week): 4°C. Avoid freeze-thaw cycles.



**Image 1.**