



[Go to Product page](#)

Datasheet for ABIN6736292  
**anti-JMJD2D antibody (C-Term)**

3 Images

Overview

Quantity:	100 µL
Target:	JMJD2D (KDM4D)
Binding Specificity:	C-Term
Reactivity:	Human
Host:	Rabbit
Clonality:	Polyclonal
Conjugate:	This JMJD2D antibody is un-conjugated
Application:	Western Blotting (WB), Immunohistochemistry (IHC), Immunohistochemistry (Paraffin-embedded Sections) (IHC (p))

Product Details

Immunogen:	Synthetic peptide from C-Terminus of human KDM4D (Q0VF39, NP_060509). Percent identity by BLAST analysis: Human, Gorilla, Gibbon, Marmoset (100%), Monkey (92%).  Type of Immunogen: Synthetic peptide
Isotype:	IgG
Specificity:	Human KDM4D / JMJD2D
Predicted Reactivity:	Percent identity by BLAST analysis: Marmoset (100%).
Purification:	Immunoaffinity purified

## Target Details

---

Target:	JMJD2D (KDM4D)
Alternative Name:	KDM4D / JMJD2D ( <a href="#">KDM4D Products</a> )
Background:	Name/Gene ID: KDM4D  Synonyms: KDM4D, JMJD2D, JHDM3D, Lysine-specific demethylase 4D, Jumonji domain containing 2D
Gene ID:	55693
NCBI Accession:	<a href="#">NP_060509</a>
UniProt:	<a href="#">Q6B016</a>
Pathways:	<a href="#">Warburg Effect</a>

## Application Details

---

Application Notes:	Approved: IHC, IHC-P, WB (0.2 - 1 µg/mL)
Comment:	Target Species of Antibody: Human
Restrictions:	For Research Use only

## Handling

---

Format:	Lyophilized
Reconstitution:	After adding water, will consist of PBS buffer with 2 % sucrose
Concentration:	Lot specific
Buffer:	Lyophilized from PBS with 2 % sucrose
Handling Advice:	Avoid repeat freeze-thaw cycles.
Storage:	4 °C,-20 °C
Storage Comment:	Long term: -20°C, the use of 50% glycerol is recommended if storing aliquots in -20°C for long term use (up to 1 year)  Short term (less than 1 week): 4°C. Avoid freeze-thaw cycles.

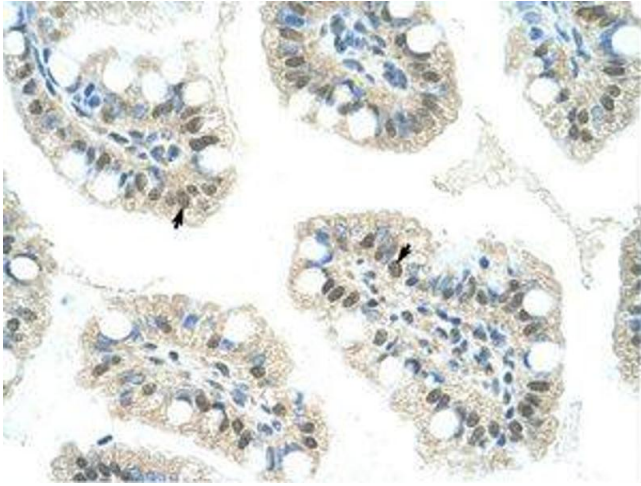


Image 1.

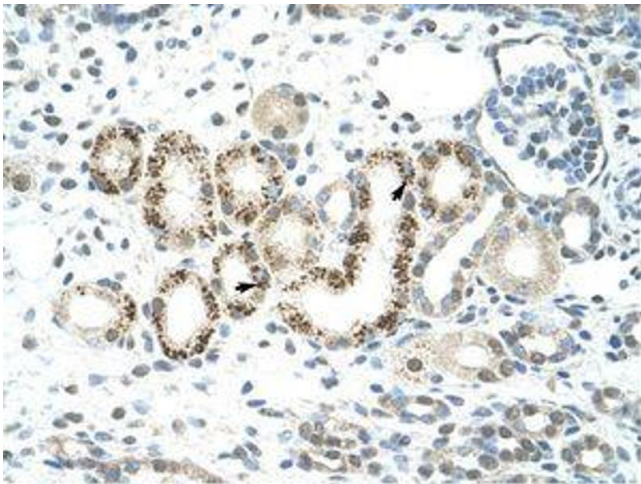


Image 2.

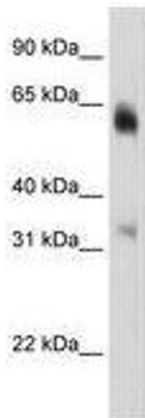


Image 3.