



[Go to Product page](#)

Datasheet for ABIN6736302
anti-IER2 antibody (AA 46-95)

2 Images

Overview

Quantity:	100 µL
Target:	IER2
Binding Specificity:	AA 46-95
Reactivity:	Human, Monkey
Host:	Rabbit
Clonality:	Polyclonal
Conjugate:	This IER2 antibody is un-conjugated
Application:	Western Blotting (WB), Immunohistochemistry (Paraffin-embedded Sections) (IHC (p)), Immunohistochemistry (IHC)

Product Details

Immunogen:	Synthetic peptide located between aa46-95 of human IER2 (Q9BTL4, NP_004898). Percent identity by BLAST analysis: Human, Gorilla, Gibbon, Monkey (100%), Marmoset (85%). Type of Immunogen: Synthetic peptide
Isotype:	IgG
Specificity:	Human IER2
Predicted Reactivity:	Percent identity by BLAST analysis: Human (100%).
Purification:	Immunoaffinity purified

Target Details

Target: IER2

Alternative Name: IER2 ([IER2 Products](#))

Background: Name/Gene ID: IER2

Synonyms: IER2, Immediate early response 2, ETR101, Protein ETR101

Gene ID: 9592

NCBI Accession: [NP_004898](#)

UniProt: [Q9BTL4](#)

Application Details

Application Notes: Approved: IHC, IHC-P, WB (0.2 - 1 µg/mL)

Comment: Target Species of Antibody: Human

Restrictions: For Research Use only

Handling

Format: Lyophilized

Reconstitution: After adding water, will consist of PBS buffer with 2 % sucrose

Concentration: Lot specific

Buffer: Lyophilized from PBS with 2 % sucrose

Handling Advice: Avoid repeat freeze-thaw cycles.

Storage: 4 °C, -20 °C

Storage Comment: Long term: -20°C, the use of 50% glycerol is recommended if storing aliquots in -20°C for long term use (up to 1 year)

Short term (less than 1 week): 4°C. Avoid freeze-thaw cycles.

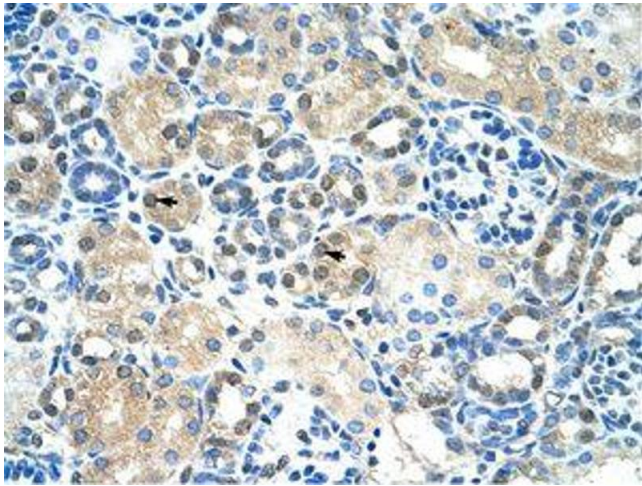


Image 1.

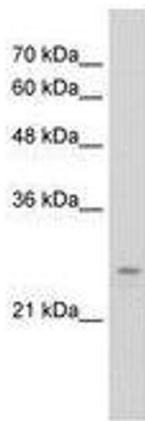


Image 2.