



[Go to Product page](#)

Datasheet for ABIN6736330
anti-GPRC5A antibody (C-Term)

1 Image

Overview

Quantity:	100 µL
Target:	GPRC5A
Binding Specificity:	C-Term
Reactivity:	Human, Cow, Dog
Host:	Rabbit
Clonality:	Polyclonal
Conjugate:	This GPRC5A antibody is un-conjugated
Application:	Western Blotting (WB)

Product Details

Immunogen:	Synthetic peptide from C-Terminus of human GPRC5A (Q8NFJ5, NP_003970). Percent identity by BLAST analysis: Human, Chimpanzee, Gorilla, Gibbon, Monkey, Galago, Dog, Bovine, Opossum (100%), Mouse, Rat, Elephant, Rabbit (92%), Marmoset, Bat (91%), Guinea pig (90%), Horse, Platypus (84%). Type of Immunogen: Synthetic peptide
Isotype:	IgG
Specificity:	Human GPRC5A / RAI3
Predicted Reactivity:	Percent identity by BLAST analysis: Human, Bovine (100%) Mouse, Rat (92%).
Purification:	Immunoaffinity purified

Target Details

Target:	GPRC5A
Alternative Name:	GPRC5A / RAI3 (GPRC5A Products)
Background:	Name/Gene ID: GPRC5A Subfamily: Orphan-C Family: GPCR Synonyms: GPRC5A, RAIG-1, Retinoic acid induced 3, Retinoic acid responsive, GPCR5A, RAI3, RAIG1, Retinoic acid-inducible gene 1
Gene ID:	9052
NCBI Accession:	NP_003970
UniProt:	Q8NFJ5

Application Details

Application Notes:	Approved: WB (0.2 - 1 µg/mL)
Comment:	Target Species of Antibody: Human
Restrictions:	For Research Use only

Handling

Format:	Lyophilized
Reconstitution:	After adding water, will consist of PBS buffer with 2 % sucrose
Concentration:	Lot specific
Buffer:	Lyophilized from PBS with 2 % sucrose
Handling Advice:	Avoid repeat freeze-thaw cycles.
Storage:	4 °C, -20 °C
Storage Comment:	Long term: -20°C, the use of 50% glycerol is recommended if storing aliquots in -20°C for long term use (up to 1 year) Short term (less than 1 week): 4°C. Avoid freeze-thaw cycles.

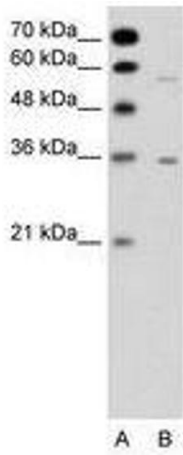


Image 1.