

Datasheet for ABIN6736337
anti-TSH receptor antibody (C-Term)



[Go to Product page](#)

1 Image

Overview

Quantity:	100 µL
Target:	TSH receptor (TSHR)
Binding Specificity:	C-Term
Reactivity:	Human, Mouse, Rat, Cow, Rabbit, Sheep, Pig, Guinea Pig
Host:	Rabbit
Clonality:	Polyclonal
Conjugate:	This TSH receptor antibody is un-conjugated
Application:	Western Blotting (WB)

Product Details

Immunogen:	Synthetic peptide from C-Terminus of human TSHR (Q96GT6, NP_001018046). Percent identity by BLAST analysis: Human, Gorilla, Gibbon, Monkey, Rat (100%), Galago, Marmoset, Hamster, Elephant, Panda, Dog, Cat, Horse (92%), Mouse, Bat, Rabbit, Pig, Guinea pig (85%), Bovine (83%). Type of Immunogen: Synthetic peptide
Isotype:	IgG
Specificity:	Human TSHR
Predicted Reactivity:	Percent identity by BLAST analysis: Human (100%) Rat, Dog, Horse (92%) Mouse, Rabbit, Pig, Guinea pig (85%) Bovine (83%).
Purification:	Immunoaffinity purified

Target Details

Target:	TSH receptor (TSHR)
Alternative Name:	TSH Receptor / TSHR (TSHR Products)
Background:	Name/Gene ID: TSHR Subfamily: Glycoprotein hormone Family: GPCR Synonyms: TSHR, CHNG1, HTSHR-I, LGR3, Thyrotrophin receptor, TSH-R, TSH receptor, Thyrotropin receptor
Gene ID:	7253
NCBI Accession:	NP_001018046
UniProt:	P16473
Pathways:	Thyroid Hormone Synthesis

Application Details

Application Notes:	Approved: WB (0.2 - 1 µg/mL)
Comment:	Target Species of Antibody: Human
Restrictions:	For Research Use only

Handling

Format:	Lyophilized
Reconstitution:	After adding water, will consist of PBS buffer with 2 % sucrose
Concentration:	Lot specific
Buffer:	Lyophilized from PBS with 2 % sucrose
Handling Advice:	Avoid repeat freeze-thaw cycles.
Storage:	4 °C,-20 °C
Storage Comment:	Long term: -20°C, the use of 50% glycerol is recommended if storing aliquots in -20°C for long term use (up to 1 year) Short term (less than 1 week): 4°C. Avoid freeze-thaw cycles.

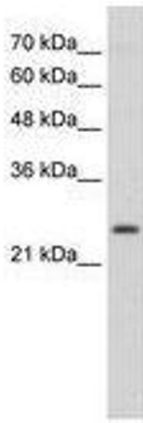


Image 1.