

Datasheet for ABIN6736353  
**anti-WRNIP1 antibody (AA 67-116)**

## 3 Images

[Go to Product page](#)

## Overview

Quantity:	100 µL
Target:	WRNIP1
Binding Specificity:	AA 67-116
Reactivity:	Human, Mouse, Rat, Cow, Monkey, Bat, Hamster
Host:	Rabbit
Clonality:	Polyclonal
Conjugate:	This WRNIP1 antibody is un-conjugated
Application:	Western Blotting (WB), Immunohistochemistry (IHC), Immunohistochemistry (Paraffin-embedded Sections) (IHC (p))

## Product Details

Brand:	IHC-plus™
Immunogen:	Synthetic peptide located between aa67-116 of human WRNIP1 (Q96S55, NP_569079). Percent identity by BLAST analysis: Human, Chimpanzee, Gibbon, Monkey, Galago, Marmoset, Mouse, Rat, Hamster, Elephant, Bat (100%), Opossum (83%).  Type of Immunogen: Synthetic peptide
Specificity:	Human WRNIP1 / WHIP
Predicted Reactivity:	Percent identity by BLAST analysis: Human, Rat (100%).
Purification:	Immunoaffinity purified

## Target Details

Target:	WRNIP1
Alternative Name:	WRNIP1 / WHIP ( <a href="#">WRNIP1 Products</a> )
Background:	Name/Gene ID: WRNIP1  Synonyms: WRNIP1, Putative helicase RUVBL, WHIP, RP11-420G6.2, ATPase WRNIP1, BA420G6.2
Gene ID:	56897
NCBI Accession:	<a href="#">NP_569079</a>
UniProt:	<a href="#">Q96S55</a>

## Application Details

Application Notes:	Approved: IHC, IHC-P (3 µg/mL), WB (0.2 - 1 µg/mL)  Usage: Immunohistochemistry: This antibody was validated for use in immunohistochemistry on a panel of 21 formalin-fixed, paraffin-embedded (FFPE) human tissues after heat induced antigen retrieval in pH 6.0 citrate buffer. After incubation with the primary antibody, slides were incubated with biotinylated secondary antibody, followed by alkaline phosphatase-streptavidin and chromogen. The stained slides were evaluated by a pathologist to confirm staining specificity. The optimal working concentration for this antibody was determined to be 3 µg/mL.
Comment:	Target Species of Antibody: Human
Restrictions:	For Research Use only

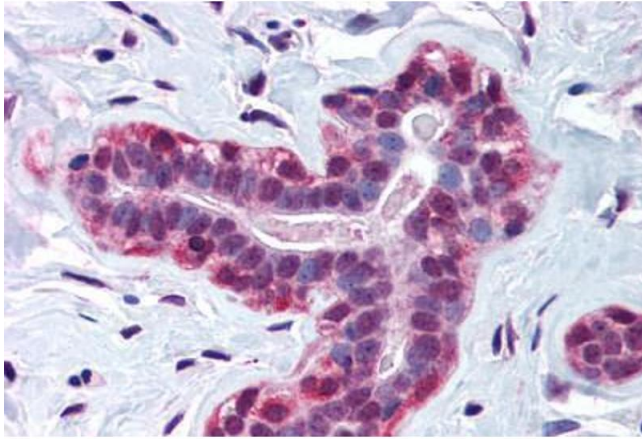
## Handling

Format:	Lyophilized
Reconstitution:	After adding water, will consist of PBS buffer with 2 % sucrose
Concentration:	Lot specific
Buffer:	Lyophilized from PBS with 2 % sucrose
Handling Advice:	Avoid repeat freeze-thaw cycles.
Storage:	4 °C,-20 °C
Storage Comment:	Long term: -20°C, the use of 50% glycerol is recommended if storing aliquots in -20°C for long

term use (up to 1 year)

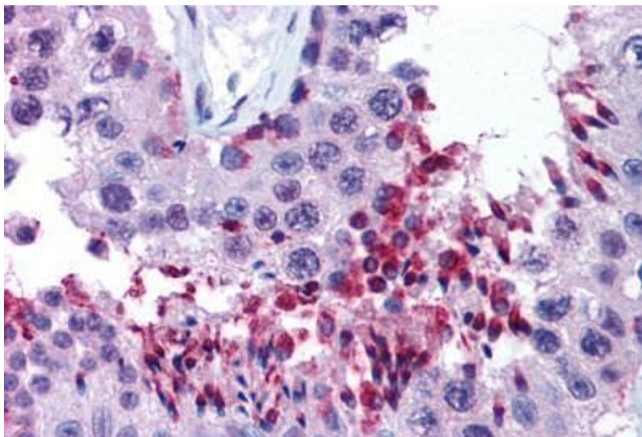
Short term (less than 1 week): 4°C. Avoid freeze-thaw cycles.

## Images



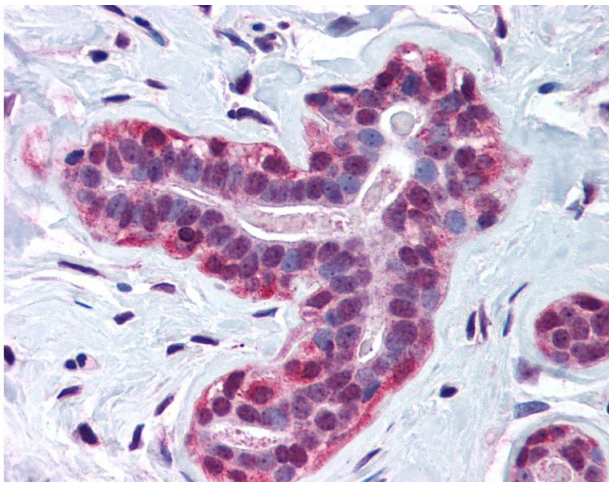
### Immunohistochemistry (Paraffin-embedded Sections)

**Image 1.** Human Breast (formalin-fixed, paraffin-embedded) stained with WRNIP1 antibody ABIN214570 at 3 ug/ml followed by biotinylated goat anti-rabbit IgG secondary antibody ABIN481713, alkaline phosphatase-streptavidin and chromogen.



### Immunohistochemistry

**Image 2.** Human Testis (formalin-fixed, paraffin-embedded) stained with WRNIP1 antibody ABIN214570 at 3 ug/ml followed by biotinylated goat anti-rabbit IgG secondary antibody ABIN481713, alkaline phosphatase-streptavidin and chromogen.



### Immunohistochemistry

**Image 3.** Anti-WRNIP1 / WHIP antibody IHC of human breast. Immunohistochemistry of formalin-fixed, paraffin-embedded tissue after heat-induced antigen retrieval. Antibody concentration 3 ug/ml. This image was taken for the unconjugated form of this product. O ...