

Datasheet for ABIN6736359  
**anti-CACNB1 antibody (AA 21-70)**

## 3 Images

[Go to Product page](#)

## Overview

Quantity:	100 µL
Target:	CACNB1
Binding Specificity:	AA 21-70
Reactivity:	Human, Mouse, Rat, Cow, Guinea Pig, Rabbit, Zebrafish (Danio rerio), Horse, Monkey, Xenopus laevis, Bat, Pig
Host:	Rabbit
Clonality:	Polyclonal
Application:	Western Blotting (WB), Immunohistochemistry (IHC), Immunohistochemistry (Paraffin-embedded Sections) (IHC (p))

## Product Details

Brand:	IHC-plus™
Immunogen:	Synthetic peptide located between aa21-70 of human CACNB1 (Q02641, NP_000714). Percent identity by BLAST analysis: Human, Chimpanzee, Gibbon, Monkey, Galago, Marmoset, Mouse, Rat, Elephant, Panda, Bovine, Bat, Rabbit, Horse, Pig, Opossum, Guinea pig, Platypus, Xenopus, Stickleback, Pufferfish, Zebrafish (100%), Gorilla, Chicken, Salmon (92%).  Type of Immunogen: Synthetic peptide
Specificity:	Human CACNB1
Predicted Reactivity:	Percent identity by BLAST analysis: Human, Mouse, Rat, Bovine, Pig, Zebrafish (100%).
Purification:	Immunoaffinity purified

## Target Details

Target:	CACNB1
Alternative Name:	CACNB1 ( <a href="#">CACNB1 Products</a> )
Background:	Name/Gene ID: CACNB1 Subfamily: Calcium channel - beta subunit Family: Ion Channel  Synonyms: CACNB1, CAB1, Cchb1, CCHLB1, CACNLB1
Gene ID:	782
NCBI Accession:	<a href="#">NP_000714</a>
UniProt:	<a href="#">Q02641</a>

## Application Details

Application Notes:	Approved: IHC, IHC-P (5 µg/mL), WB (0.2 - 1 µg/mL)  Usage: Immunohistochemistry: This antibody was validated for use in immunohistochemistry on a panel of 21 formalin-fixed, paraffin-embedded (FFPE) human tissues after heat induced antigen retrieval in pH 6.0 citrate buffer. After incubation with the primary antibody, slides were incubated with biotinylated secondary antibody, followed by alkaline phosphatase-streptavidin and chromogen. The stained slides were evaluated by a pathologist to confirm staining specificity. The optimal working concentration for this antibody was determined to be 5 µg/mL.
Comment:	Target Species of Antibody: Human
Restrictions:	For Research Use only

## Handling

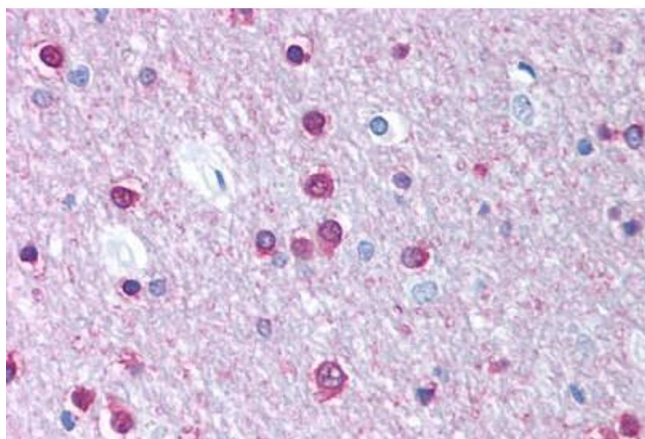
Format:	Lyophilized
Reconstitution:	After adding water, will consist of PBS buffer with 2 % sucrose
Concentration:	Lot specific
Buffer:	Lyophilized from PBS with 2 % sucrose
Handling Advice:	Avoid repeat freeze-thaw cycles.
Storage:	4 °C, -20 °C

## Handling

Storage Comment: Long term: -20°C, the use of 50% glycerol is recommended if storing aliquots in -20°C for long term use (up to 1 year)

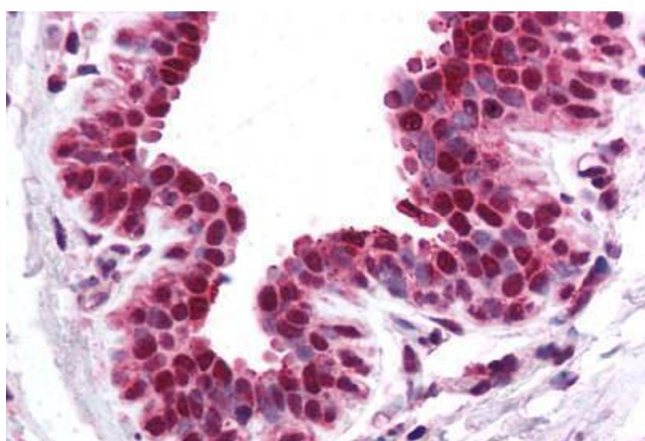
Short term (less than 1 week): 4°C. Avoid freeze-thaw cycles.

## Images



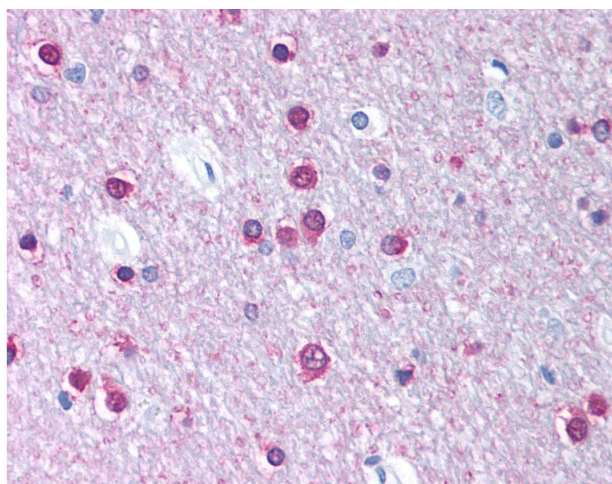
### Immunohistochemistry (Paraffin-embedded Sections)

**Image 1.** Human Brain, Cortex, White Matter (formalin-fixed, paraffin-embedded) stained with CACNB1 antibody ABIN214731 at 5 ug/ml followed by biotinylated goat anti-rabbit IgG secondary antibody ABIN481713, alkaline phosphatase-streptavidin and chromogen.



### Immunohistochemistry (Paraffin-embedded Sections)

**Image 2.** Human Breast (formalin-fixed, paraffin-embedded) stained with CACNB1 antibody ABIN214731 at 5 ug/ml followed by biotinylated goat anti-rabbit IgG secondary antibody ABIN481713, alkaline phosphatase-streptavidin and chromogen.



### Immunohistochemistry

**Image 3.** Anti-CACNB1 antibody IHC of human brain, cortex, white matter. Immunohistochemistry of formalin-fixed, paraffin-embedded tissue after heat-induced antigen retrieval. Antibody concentration 5 ug/ml. This image was taken for the unconjugated form of t ...