

Datasheet for ABIN6736364  
**anti-CDC25B antibody (AA 56-105)**

## 2 Images

[Go to Product page](#)

## Overview

Quantity:	100 µL
Target:	CDC25B
Binding Specificity:	AA 56-105
Reactivity:	Human, Mouse, Rat, Dog, Guinea Pig, Horse, Cow, Pig
Host:	Rabbit
Clonality:	Polyclonal
Conjugate:	This CDC25B antibody is un-conjugated
Application:	Western Blotting (WB), Immunohistochemistry (IHC), Immunohistochemistry (Paraffin-embedded Sections) (IHC (p))

## Product Details

Brand:	IHC-plus™
Immunogen:	Synthetic peptide located between aa56-105 of human CDC25B (P30305, NP_068659). Percent identity by BLAST analysis: Human, Gorilla, Galago, Marmoset, Elephant, Panda, Dog, Bovine, Horse, Pig, Guinea pig (100%), Monkey, Bat, Rabbit (92%), Mouse, Rat (85%).  Type of Immunogen: Synthetic peptide
Specificity:	Human CDC25B
Predicted Reactivity:	Percent identity by BLAST analysis: Human, Dog, Bovine, Horse, Pig, Guinea pig (100%) Rabbit (92%) Mouse, Rat (85%).
Purification:	Immunoaffinity purified

## Target Details

Target:	CDC25B
Alternative Name:	CDC25B ( <a href="#">CDC25B Products</a> )
Background:	Name/Gene ID: CDC25B Subfamily: CDC25 Family: Protein Phosphatase  Synonyms: CDC25B, CDC25B phosphatase, Cell division cycle 25B, M-phase inducer phosphatase 2, CDC25HU2
Gene ID:	994
NCBI Accession:	<a href="#">NP_068659</a>
UniProt:	<a href="#">P30305</a>
Pathways:	<a href="#">Cell Division Cycle</a> , <a href="#">M Phase</a> , <a href="#">Autophagy</a>

## Application Details

Application Notes:	Approved: IHC, IHC-P (5 µg/mL), WB (0.2 - 1 µg/mL)  Usage: Immunohistochemistry: This antibody was validated for use in immunohistochemistry on a panel of 21 formalin-fixed, paraffin-embedded (FFPE) human tissues after heat induced antigen retrieval in pH 6.0 citrate buffer. After incubation with the primary antibody, slides were incubated with biotinylated secondary antibody, followed by alkaline phosphatase-streptavidin and chromogen. The stained slides were evaluated by a pathologist to confirm staining specificity. The optimal working concentration for this antibody was determined to be 5 µg/mL.
Comment:	Target Species of Antibody: Human
Restrictions:	For Research Use only

## Handling

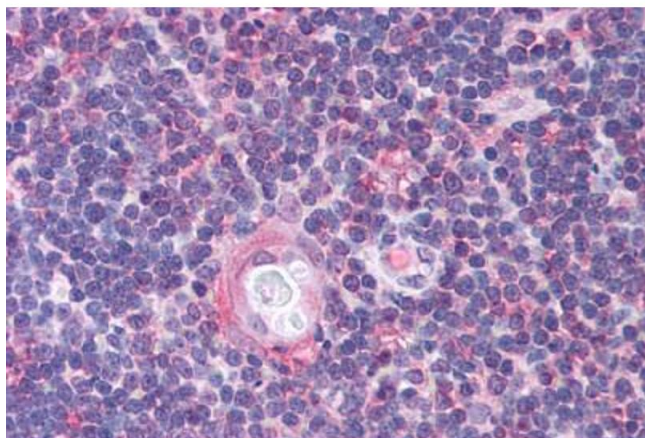
Format:	Lyophilized
Reconstitution:	Distilled water
Concentration:	Lot specific
Buffer:	Lyophilized from PBS with 2 % sucrose
Handling Advice:	Avoid repeat freeze-thaw cycles.

## Handling

Storage: 4 °C, -20 °C

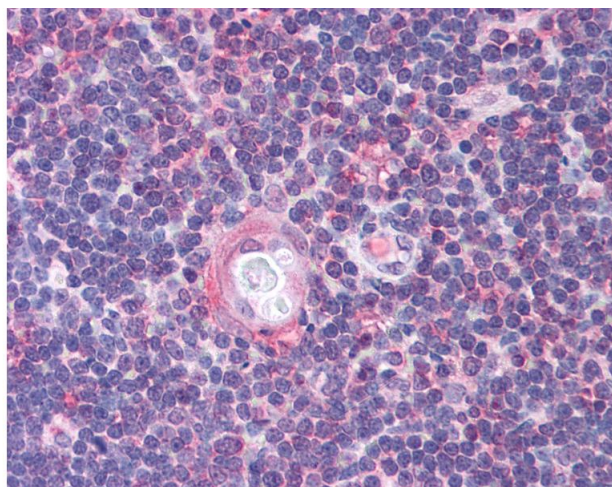
Storage Comment: Long term: -20°C, the use of 50% glycerol is recommended if storing aliquots in -20°C for long term use (up to 1 year)  
Short term (less than 1 week): 4°C. Avoid freeze-thaw cycles.

## Images



### Immunohistochemistry (Paraffin-embedded Sections)

**Image 1.** Human Thymus (formalin-fixed, paraffin-embedded) stained with CDC25B antibody ABIN214736 at 5 ug/ml followed by biotinylated goat anti-rabbit IgG secondary antibody ABIN481713, alkaline phosphatase-streptavidin and chromogen.



### Immunohistochemistry

**Image 2.** Anti-CDC25B antibody IHC of human thymus. Immunohistochemistry of formalin-fixed, paraffin-embedded tissue after heat-induced antigen retrieval. Antibody concentration 5 ug/ml. This image was taken for the unconjugated form of this product. Other fo ...