

Datasheet for ABIN6736366  
**anti-CHRNA3 antibody (AA 26-75)**

## 3 Images

[Go to Product page](#)

## Overview

Quantity:	100 µL
Target:	CHRNA3
Binding Specificity:	AA 26-75
Reactivity:	Human, Mouse, Rat, Cow, Dog, Rabbit, Horse, Monkey
Host:	Rabbit
Clonality:	Polyclonal
Conjugate:	This CHRNA3 antibody is un-conjugated
Application:	Western Blotting (WB), Immunohistochemistry (IHC), Immunohistochemistry (Paraffin-embedded Sections) (IHC (p))

## Product Details

Brand:	IHC-plus™
Immunogen:	Synthetic peptide located between aa26-75 of human CHRNA3 (P32297, NP_000734). Percent identity by BLAST analysis: Human, Gorilla, Gibbon, Monkey, Galago, Marmoset, Ferret, Elephant, Dog, Bovine, Rabbit, Horse (100%), Pig, Opossum, Guinea pig (92%), Platypus (90%), Mouse, Rat, Hamster (85%), Turkey (83%).  Type of Immunogen: Synthetic peptide
Specificity:	Human CHRNA3
Predicted Reactivity:	Percent identity by BLAST analysis: Human, Dog, Rabbit (100%) Bovine, Guinea pig (92%) Mouse, Rat (85%).

## Product Details

Purification: Immunoaffinity purified

## Target Details

Target: CHRNA3

Alternative Name: CHRNA3 ([CHRNA3 Products](#))

Background: Name/Gene ID: CHRNA3  
Subfamily: Nicotinic acetylcholine receptor  
Family: Ion Channel  
  
Synonyms: CHRNA3, AChR-alpha3, Acra-3, LNCR2, NACHR alpha 3, PAOD2, NACHRA3

Gene ID: 1136

NCBI Accession: [NP\\_000734](#)

UniProt: [P32297](#)

Pathways: [Synaptic Membrane](#)

## Application Details

Application Notes: Approved: IHC, IHC-P (5 µg/mL), WB (0.1 µg/mL)

Usage: Immunohistochemistry: This antibody was validated for use in immunohistochemistry on a panel of 21 formalin-fixed, paraffin-embedded (FFPE) human tissues after heat induced antigen retrieval in pH 6.0 citrate buffer. After incubation with the primary antibody, slides were incubated with biotinylated secondary antibody, followed by alkaline phosphatase-streptavidin and chromogen. The stained slides were evaluated by a pathologist to confirm staining specificity. The optimal working concentration for this antibody was determined to be 5 µg/mL.

Comment: Target Species of Antibody: Human

Restrictions: For Research Use only

## Handling

Format: Lyophilized

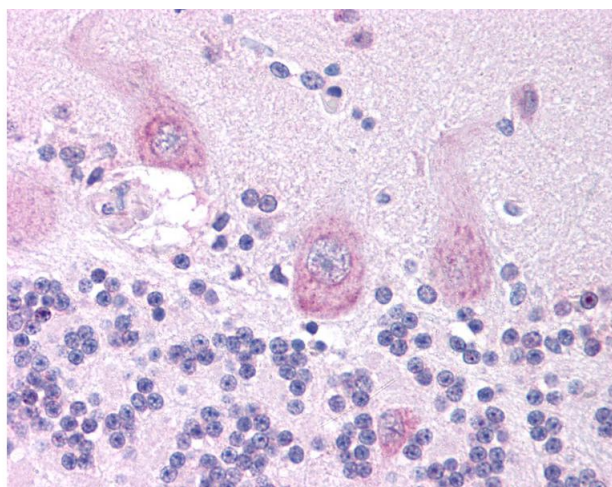
Reconstitution: After adding water, will consist of PBS buffer with 2 % sucrose

Concentration: Lot specific

## Handling

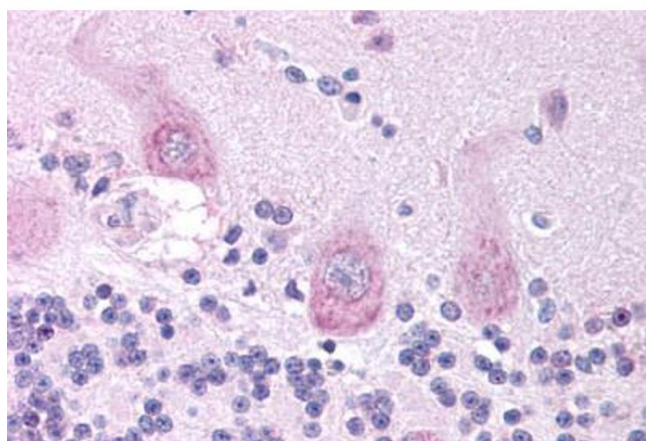
Buffer:	Lyophilized.
Handling Advice:	Avoid repeat freeze-thaw cycles.
Storage:	4 °C, -20 °C
Storage Comment:	Long term: -20°C, the use of 50% glycerol is recommended if storing aliquots in -20°C for long term use (up to 1 year) Short term (less than 1 week): 4°C. Avoid freeze-thaw cycles.

## Images



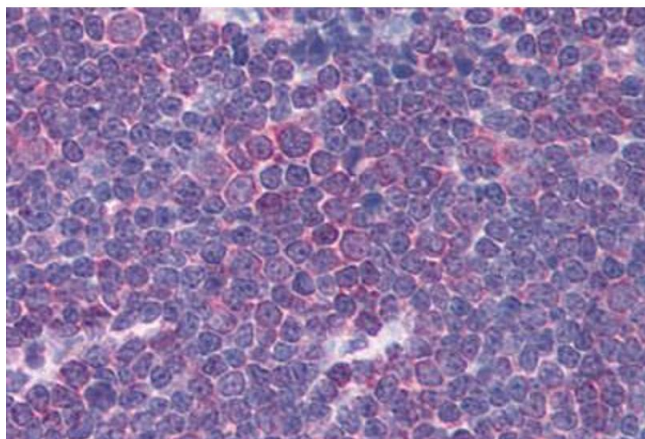
### Immunohistochemistry

**Image 1.** Anti-CHRNA3 antibody IHC of human brain, cerebellum. Immunohistochemistry of formalin-fixed, paraffin-embedded tissue after heat-induced antigen retrieval. Antibody concentration 5 ug/ml. This image was taken for the unconjugated form of this product ...



### Immunohistochemistry (Paraffin-embedded Sections)

**Image 2.** Human Brain, Cerebellum (formalin-fixed, paraffin-embedded) stained with CHRNA3 antibody ABIN214739 at 5 ug/ml followed by biotinylated goat anti-rabbit IgG secondary antibody ABIN481713, alkaline phosphatase-streptavidin and chromogen.



#### Immunohistochemistry (Paraffin-embedded Sections)

**Image 3.** Human Thymus (formalin-fixed, paraffin-embedded) stained with CHRNA3 antibody ABIN214739 at 5 ug/ml followed by biotinylated goat anti-rabbit IgG secondary antibody ABIN481713, alkaline phosphatase-streptavidin and chromogen.