

Datasheet for ABIN6736368
anti-CHRNA2 antibody (AA 21-70)

2 Images

[Go to Product page](#)

Overview

Quantity:	100 µL
Target:	CHRNA2
Binding Specificity:	AA 21-70
Reactivity:	Human, Mouse, Rat, Dog, Cow, Pig, Guinea Pig, Zebrafish (Danio rerio), Bat, Monkey, Xenopus laevis, Horse
Host:	Rabbit
Clonality:	Polyclonal
Conjugate:	This CHRNA2 antibody is un-conjugated
Application:	Western Blotting (WB), Immunohistochemistry (IHC), Immunohistochemistry (Paraffin-embedded Sections) (IHC (p))

Product Details

Brand:	IHC-plus™
Immunogen:	Synthetic peptide located between aa21-70 of human CHRNA2 (P17787, NP_000739). Percent identity by BLAST analysis: Human, Chimpanzee, Gorilla, Monkey, Galago, Marmoset, Mouse, Rat, Ferret, Elephant, Panda, Dog, Bovine, Bat, Horse, Pig, Guinea pig, Xenopus (100%), Opossum, Sea squirt (92%), Zebra finch, Chicken (85%), Turkey (84%), Pufferfish, Zebrafish (83%). Type of Immunogen: Synthetic peptide
Specificity:	Human CHRNA2

Product Details

Predicted Reactivity: Percent identity by BLAST analysis: Human, Mouse, Dog, Bovine, Pig (100%) Xenopus (92%) Zebrafish (83%).

Purification: Immunoaffinity purified

Target Details

Target: CHRNB2

Alternative Name: CHRNB2 ([CHRNB2 Products](#))

Background: Name/Gene ID: CHRNB2
Subfamily: Nicotinic acetylcholine receptor
Family: Ion Channel

Synonyms: CHRNB2, AChR-beta1, Acrb2, EFNL3, NACHR beta 2, NACHRB2

Gene ID: 1141

NCBI Accession: [NP_000739](#)

UniProt: [P17787](#)

Pathways: [Sensory Perception of Sound](#), [Feeding Behaviour](#)

Application Details

Application Notes: Approved: IHC, IHC-P (10 µg/mL), WB (0.2 - 1 µg/mL)

Usage: Immunohistochemistry: This antibody was validated for use in immunohistochemistry on a panel of 21 formalin-fixed, paraffin-embedded (FFPE) human tissues after heat induced antigen retrieval in pH 6.0 citrate buffer. After incubation with the primary antibody, slides were incubated with biotinylated secondary antibody, followed by alkaline phosphatase-streptavidin and chromogen. The stained slides were evaluated by a pathologist to confirm staining specificity. The optimal working concentration for this antibody was determined to be 10 µg/mL.

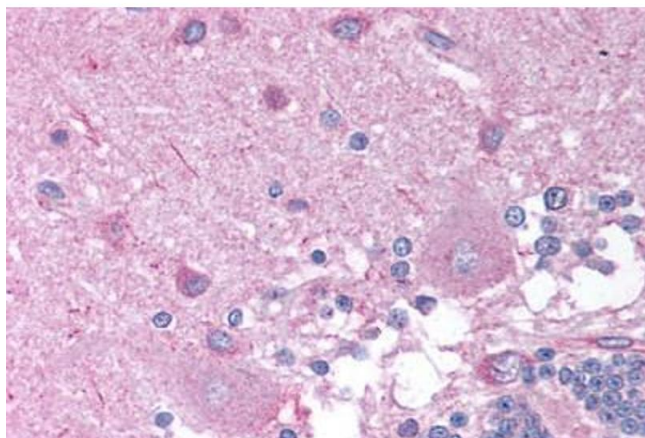
Comment: Target Species of Antibody: Human

Restrictions: For Research Use only

Handling

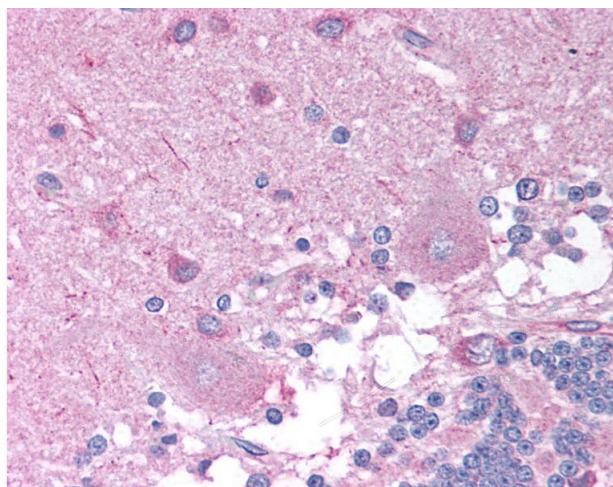
Format:	Lyophilized
Reconstitution:	Distilled Water.
Concentration:	Lot specific
Buffer:	Lyophilized from PBS with 2 % sucrose
Handling Advice:	Avoid repeat freeze-thaw cycles.
Storage:	4 °C,-20 °C
Storage Comment:	Long term: -20°C, the use of 50% glycerol is recommended if storing aliquots in -20°C for long term use (up to 1 year) Short term (less than 1 week): 4°C. Avoid freeze-thaw cycles.

Images



Immunohistochemistry (Paraffin-embedded Sections)

Image 1. Human Brain, Cerebellum (formalin-fixed, paraffin-embedded) stained with CHRNA2 antibody ABIN214742 at 10 ug/ml followed by biotinylated goat anti-rabbit IgG secondary antibody ABIN481713, alkaline phosphatase-streptavidin and chromogen.



Immunohistochemistry

Image 2. Anti-CHRNA2 antibody IHC of human brain, cerebellum. Immunohistochemistry of formalin-fixed, paraffin-embedded tissue after heat-induced antigen retrieval. Antibody concentration 10 ug/ml. This image was taken for the unconjugated form of this produ ...