

Datasheet for ABIN6736369

anti-CHRNA3 antibody (AA 176-225)



[Go to Product page](#)

2 Images

Overview

Quantity:	100 µL
Target:	CHRNA3
Binding Specificity:	AA 176-225
Reactivity:	Human, Mouse, Rat, Dog, Rabbit, Guinea Pig, Cow, Chicken, Monkey
Host:	Rabbit
Clonality:	Polyclonal
Conjugate:	This CHRNA3 antibody is un-conjugated
Application:	Western Blotting (WB), Immunohistochemistry (IHC), Immunohistochemistry (Paraffin-embedded Sections) (IHC (p))

Product Details

Brand:	IHC-plus™
Immunogen:	<p>Synthetic peptide located between aa176-225 of human CHRNA3 (Q05901, NP_000740).</p> <p>Percent identity by BLAST analysis: Human, Chimpanzee, Gorilla, Gibbon, Marmoset, Mouse, Rat, Elephant, Dog, Bovine, Rabbit, Guinea pig, Turkey, Zebra finch, Chicken (100%), Galago, Bat, Horse, Opossum (93%), Panda, Platypus (86%), Xenopus (80%).</p> <p>Type of Immunogen: Synthetic peptide</p>
Specificity:	Human CHRNA3
Predicted Reactivity:	Percent identity by BLAST analysis: Mouse, Rat, Dog, Bovine, Rabbit, Guinea pig, Chicken (100%) Horse (93%).

Product Details

Purification: Immunoaffinity purified

Target Details

Target: CHRNB3

Alternative Name: CHRNB3 ([CHRNB3 Products](#))

Background: Name/Gene ID: CHRNB3
Subfamily: Nicotinic acetylcholine receptor
Family: Ion Channel

Synonyms: CHRNB3, AChR-beta3, NACHR beta 3

Gene ID: 1142

NCBI Accession: [NP_000740](#)

UniProt: [Q05901](#)

Application Details

Application Notes: Approved: IHC, IHC-P (2.5 µg/mL), WB (0.03 µg/mL)

Usage: Immunohistochemistry: This antibody was validated for use in immunohistochemistry on a panel of 21 formalin-fixed, paraffin-embedded (FFPE) human tissues after heat induced antigen retrieval in pH 6.0 citrate buffer. After incubation with the primary antibody, slides were incubated with biotinylated secondary antibody, followed by alkaline phosphatase-streptavidin and chromogen. The stained slides were evaluated by a pathologist to confirm staining specificity. The optimal working concentration for this antibody was determined to be 2.5 µg/mL.

Comment: Target Species of Antibody: Human

Restrictions: For Research Use only

Handling

Format: Lyophilized

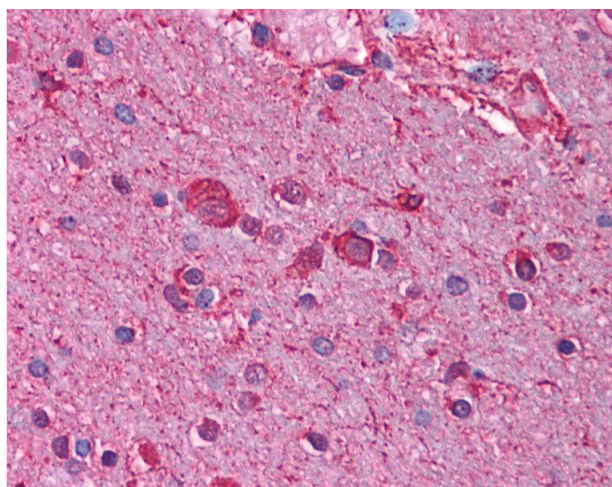
Reconstitution: After adding water, will consist of PBS buffer with 2 % sucrose

Concentration: Lot specific

Handling

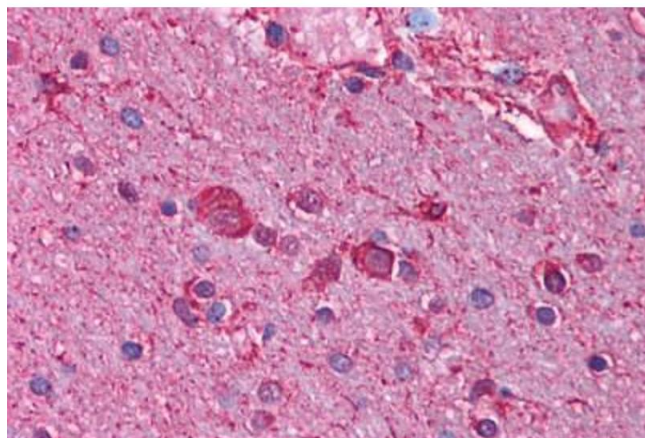
Buffer:	Lyophilized.
Handling Advice:	Avoid repeat freeze-thaw cycles.
Storage:	4 °C, -20 °C
Storage Comment:	Long term: -20°C, the use of 50% glycerol is recommended if storing aliquots in -20°C for long term use (up to 1 year) Short term (less than 1 week): 4°C. Avoid freeze-thaw cycles.

Images



Immunohistochemistry

Image 1. Anti-CHRNA3 antibody IHC of human brain, cortex. Immunohistochemistry of formalin-fixed, paraffin-embedded tissue after heat-induced antigen retrieval. Antibody concentration 5 ug/ml. This image was taken for the unconjugated form of this product. O ...



Immunohistochemistry (Paraffin-embedded Sections)

Image 2. Human Brain, Cortex (formalin-fixed, paraffin-embedded) stained with CHRNA3 antibody ABIN214743 at 2.5 ug/ml followed by biotinylated goat anti-rabbit IgG secondary antibody ABIN481713, alkaline phosphatase-streptavidin and chromogen.