



[Go to Product page](#)

Datasheet for ABIN6736370  
**anti-Claudin 11 antibody (C-Term)**

2 Images

Overview

Quantity:	100 µL
Target:	Claudin 11 (CLDN11)
Binding Specificity:	C-Term
Reactivity:	Human, Rat, Cow, Dog, Rabbit, Guinea Pig, Horse, Pig, Monkey, Bat
Host:	Rabbit
Clonality:	Polyclonal
Conjugate:	This Claudin 11 antibody is un-conjugated
Application:	Western Blotting (WB), Immunohistochemistry (IHC), Immunohistochemistry (Paraffin-embedded Sections) (IHC (p))

Product Details

Brand:	IHC-plus™
Immunogen:	Synthetic peptide from C-Terminus of human CLDN11 (O75508, NP_005593). Percent identity by BLAST analysis: Human, Chimpanzee, Gorilla, Orangutan, Gibbon, Monkey, Dog, Bovine, Bat, Rabbit, Horse, Pig, Guinea pig (100%), Galago, Elephant, Panda (92%), Marmoset, Mouse, Rat, Opossum, Turkey, Chicken (85%).  Type of Immunogen: Synthetic peptide
Specificity:	Human CLDN11 / Claudin 11
Predicted Reactivity:	Percent identity by BLAST analysis: Dog, Pig (100%) Rat, Chicken (85%).
Purification:	Immunoaffinity purified

## Target Details

---

Target:	Claudin 11 (CLDN11)
Alternative Name:	CLDN11 / Claudin 11 ( <a href="#">CLDN11 Products</a> )
Background:	Name/Gene ID: CLDN11 Family: Claudin  Synonyms: CLDN11, Claudin-11, OSP, OTM, Claudin 11
Gene ID:	5010
NCBI Accession:	<a href="#">NP_005593</a>
UniProt:	<a href="#">O75508</a>
Pathways:	<a href="#">Hepatitis C</a>

## Application Details

---

Application Notes:	Approved: IHC, IHC-P (5 µg/mL), WB (0.2 - 1 µg/mL)  Usage: Immunohistochemistry: This antibody was validated for use in immunohistochemistry on a panel of 21 formalin-fixed, paraffin-embedded (FFPE) human tissues after heat induced antigen retrieval in pH 6.0 citrate buffer. After incubation with the primary antibody, slides were incubated with biotinylated secondary antibody, followed by alkaline phosphatase-streptavidin and chromogen. The stained slides were evaluated by a pathologist to confirm staining specificity. The optimal working concentration for this antibody was determined to be 5 µg/mL.
Comment:	Target Species of Antibody: Human
Restrictions:	For Research Use only

## Handling

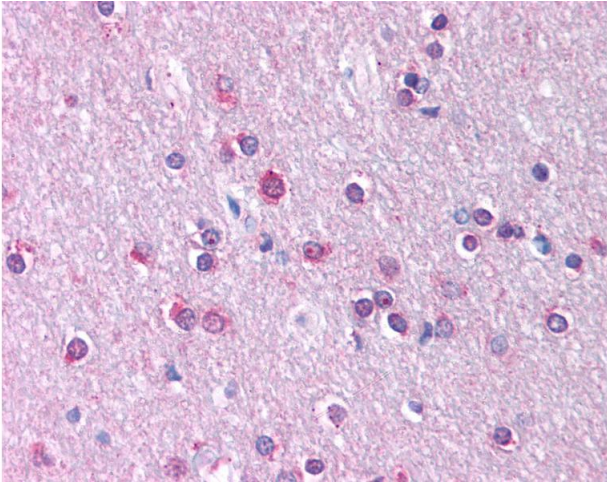
---

Format:	Lyophilized
Reconstitution:	After adding water, will consist of PBS buffer with 2 % sucrose
Concentration:	Lot specific
Buffer:	Lyophilized from PBS with 2 % sucrose
Handling Advice:	Avoid repeat freeze-thaw cycles.
Storage:	4 °C, -20 °C

## Handling

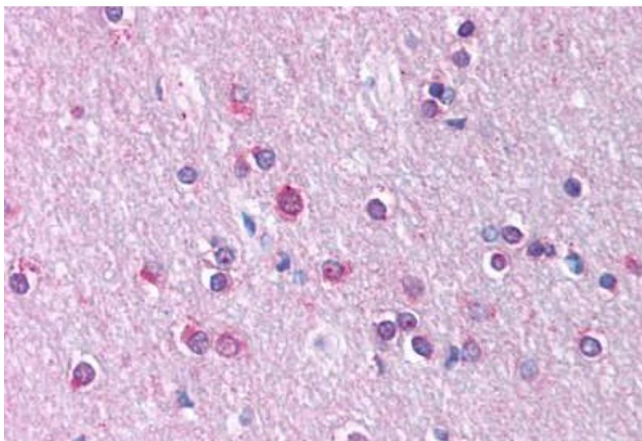
Storage Comment: Long term: -20°C, the use of 50% glycerol is recommended if storing aliquots in -20°C for long term use (up to 1 year)  
Short term (less than 1 week): 4°C. Avoid freeze-thaw cycles.

## Images



### Immunohistochemistry

**Image 1.** Anti-CLDN11 / Claudin 11 antibody IHC of human brain, cortex, white matter. Immunohistochemistry of formalin-fixed, paraffin-embedded tissue after heat-induced antigen retrieval. Antibody concentration 5 ug/ml. This image was taken for the unconjuga ...



### Immunohistochemistry (Paraffin-embedded Sections)

**Image 2.** Human Brain, Cortex, White Matter (formalin-fixed, paraffin-embedded) stained with CLDN11 antibody ABIN214744 at 5 ug/ml followed by biotinylated goat anti-rabbit IgG secondary antibody ABIN481713, alkaline phosphatase-streptavidin and chromogen.