

Datasheet for ABIN6736373
anti-CLIC6 antibody (AA 435-484)

3 Images

[Go to Product page](#)

Overview

Quantity:	100 µL
Target:	CLIC6
Binding Specificity:	AA 435-484
Reactivity:	Human, Mouse, Rat, Rabbit
Host:	Rabbit
Clonality:	Polyclonal
Conjugate:	This CLIC6 antibody is un-conjugated
Application:	Western Blotting (WB), Immunohistochemistry (IHC), Immunohistochemistry (Paraffin-embedded Sections) (IHC (p))

Product Details

Brand:	IHC-plus™
Immunogen:	Synthetic peptide located between aa435-484 of human CLIC6 (Q96NY7-2, NP_444507). Percent identity by BLAST analysis: Human, Galago, Mouse, Rat, Rabbit (100%), Monkey (92%), Gorilla (85%). Type of Immunogen: Synthetic peptide
Specificity:	Human CLIC6
Predicted Reactivity:	Percent identity by BLAST analysis: Human, Mouse, Rat, Rabbit (100%).
Purification:	Immunoaffinity purified

Target Details

Target:	CLIC6
Alternative Name:	CLIC6 (CLIC6 Products)
Background:	Name/Gene ID: CLIC6 Subfamily: Chloride channel - intracellular Family: Ion Channel Synonyms: CLIC6, Chloride channel form A, CLIC1L, Parchorin
Gene ID:	54102
NCBI Accession:	NP_444507
UniProt:	Q96NY7

Application Details

Application Notes:	Approved: IHC, IHC-P (5 µg/mL), WB (0.2 - 1 µg/mL) Usage: Immunohistochemistry: This antibody was validated for use in immunohistochemistry on a panel of 21 formalin-fixed, paraffin-embedded (FFPE) human tissues after heat induced antigen retrieval in pH 6.0 citrate buffer. After incubation with the primary antibody, slides were incubated with biotinylated secondary antibody, followed by alkaline phosphatase-streptavidin and chromogen. The stained slides were evaluated by a pathologist to confirm staining specificity. The optimal working concentration for this antibody was determined to be 5 µg/mL.
Comment:	Target Species of Antibody: Human
Restrictions:	For Research Use only

Handling

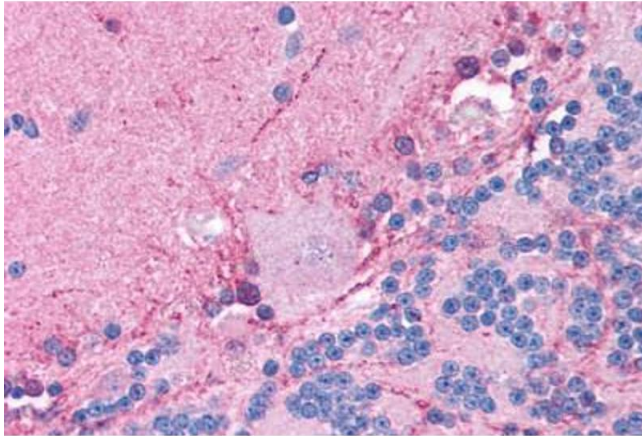
Format:	Lyophilized
Reconstitution:	After adding water, will consist of PBS buffer with 2 % sucrose
Concentration:	Lot specific
Buffer:	Lyophilized from PBS with 2 % sucrose
Handling Advice:	Avoid repeat freeze-thaw cycles.
Storage:	4 °C, -20 °C

Handling

Storage Comment: Long term: -20°C, the use of 50% glycerol is recommended if storing aliquots in -20°C for long term use (up to 1 year)

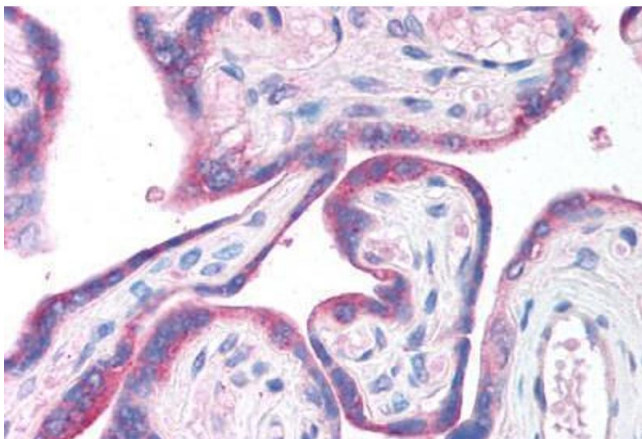
Short term (less than 1 week): 4°C. Avoid freeze-thaw cycles.

Images



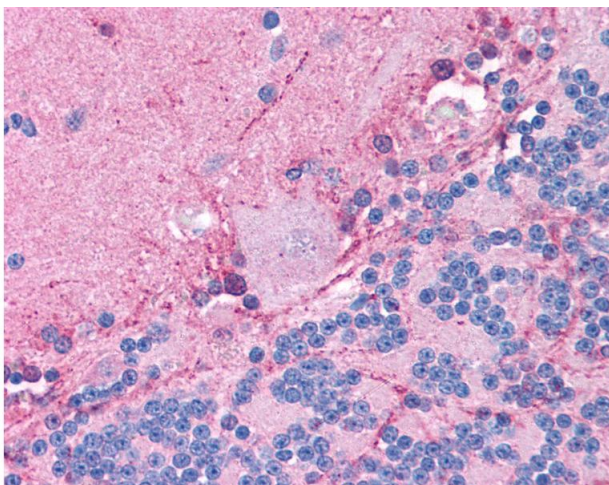
Immunohistochemistry (Paraffin-embedded Sections)

Image 1. Human Brain, Cerebellum (formalin-fixed, paraffin-embedded) stained with CLIC6 antibody ABIN214747 at 5 ug/ml followed by biotinylated goat anti-rabbit IgG secondary antibody ABIN481713, alkaline phosphatase-streptavidin and chromogen.



Immunohistochemistry

Image 2. Human Placenta (formalin-fixed, paraffin-embedded) stained with CLIC6 antibody ABIN214747 at 5 ug/ml followed by biotinylated goat anti-rabbit IgG secondary antibody ABIN481713, alkaline phosphatase-streptavidin and chromogen.



Immunohistochemistry

Image 3. Anti-CLIC6 antibody IHC of human brain, cerebellum. Immunohistochemistry of formalin-fixed, paraffin-embedded tissue after heat-induced antigen retrieval. Antibody concentration 5 ug/ml. This image was taken for the unconjugated form of this product ...