

Datasheet for ABIN6736375
anti-EIF4G2 antibody (AA 766-815)

3 Images

[Go to Product page](#)

Overview

Quantity:	100 µL
Target:	EIF4G2
Binding Specificity:	AA 766-815
Reactivity:	Human, Cow, Rabbit, Dog, Horse, Pig, Monkey, Bat
Host:	Rabbit
Clonality:	Polyclonal
Conjugate:	This EIF4G2 antibody is un-conjugated
Application:	Western Blotting (WB), Immunohistochemistry (IHC), Immunohistochemistry (Paraffin-embedded Sections) (IHC (p))

Product Details

Brand:	IHC-plus™
Immunogen:	Synthetic peptide located between aa766-815 of human EIF4G2 (P78344). Percent identity by BLAST analysis: Human, Chimpanzee, Gorilla, Orangutan, Gibbon, Monkey, Marmoset, Elephant, Dog, Bovine, Bat, Rabbit, Horse, Pig (100%), Mouse, Rat, Guinea pig, Turkey, Chicken (92%). Type of Immunogen: Synthetic peptide
Specificity:	Human EIF4G2
Predicted Reactivity:	Percent identity by BLAST analysis: Human, Dog, Horse, Pig (100%) Mouse, Rat, Guinea pig, Chicken (92%).
Purification:	Immunoaffinity purified

Target Details

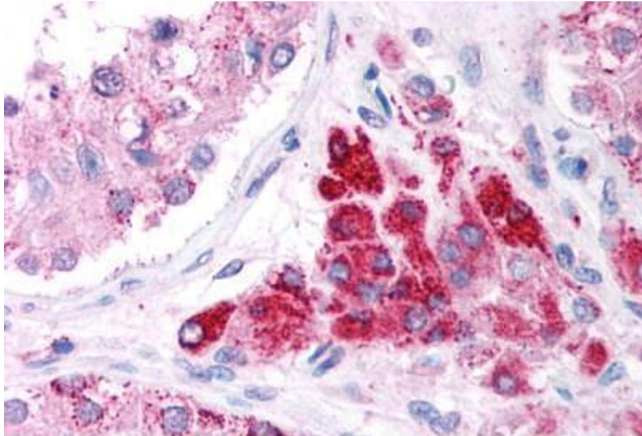
Target:	EIF4G2
Alternative Name:	DAP-5 / EIF4G2 (EIF4G2 Products)
Background:	Name/Gene ID: EIF4G2 Synonyms: EIF4G2, AAG1, Aging-associated protein 1, DAP-5, DAP5, Death-associated protein 5, EIF-4G 2, EIF-4-gamma 2, EIF4G 2, Translation repressor nat1, p97
Gene ID:	1982

Application Details

Application Notes:	Approved: IHC, IHC-P (5 µg/mL), WB (0.2 - 1 µg/mL) Usage: Immunohistochemistry: This antibody was validated for use in immunohistochemistry on a panel of 21 formalin-fixed, paraffin-embedded (FFPE) human tissues after heat induced antigen retrieval in pH 6.0 citrate buffer. After incubation with the primary antibody, slides were incubated with biotinylated secondary antibody, followed by alkaline phosphatase-streptavidin and chromogen. The stained slides were evaluated by a pathologist to confirm staining specificity. The optimal working concentration for this antibody was determined to be 5 µg/mL.
Comment:	Target Species of Antibody: Human
Restrictions:	For Research Use only

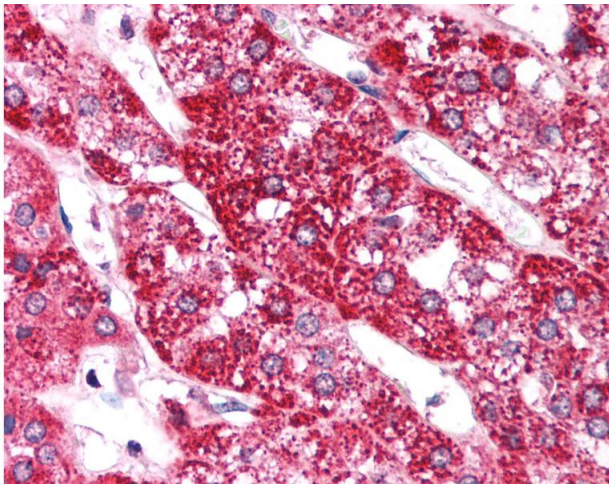
Handling

Format:	Lyophilized
Reconstitution:	After adding water, will consist of PBS buffer with 2 % sucrose
Concentration:	Lot specific
Buffer:	Lyophilized from PBS with 2 % sucrose
Handling Advice:	Avoid repeat freeze-thaw cycles.
Storage:	4 °C,-20 °C
Storage Comment:	Long term: -20°C, the use of 50% glycerol is recommended if storing aliquots in -20°C for long term use (up to 1 year) Short term (less than 1 week): 4°C. Avoid freeze-thaw cycles.



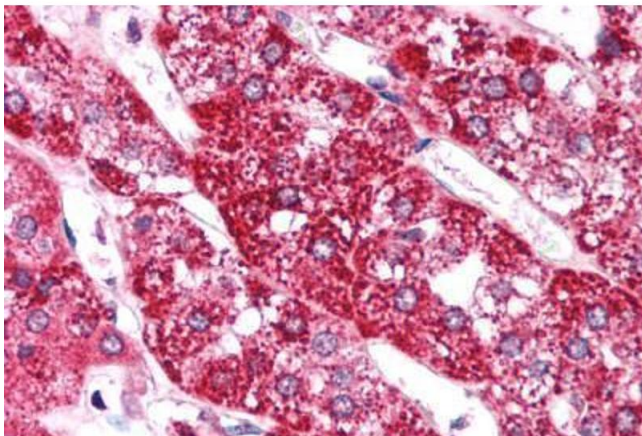
Immunohistochemistry (Paraffin-embedded Sections)

Image 1. Human Testis (formalin-fixed, paraffin-embedded) stained with EIF4G2 antibody ABIN214749 at 5 ug/ml followed by biotinylated goat anti-rabbit IgG secondary antibody ABIN481713, alkaline phosphatase-streptavidin and chromogen.



Immunohistochemistry

Image 2. Anti-EIF4G2 antibody IHC of human adrenal. Immunohistochemistry of formalin-fixed, paraffin-embedded tissue after heat-induced antigen retrieval. Antibody concentration 5 ug/ml. This image was taken for the unconjugated form of this product. Other f ...



Immunohistochemistry

Image 3. Human Adrenal (formalin-fixed, paraffin-embedded) stained with EIF4G2 antibody ABIN214749 at 5 ug/ml followed by biotinylated goat anti-rabbit IgG secondary antibody ABIN481713, alkaline phosphatase-streptavidin and chromogen.