

Datasheet for ABIN6736377
anti-FOXA1 antibody (AA 395-444)



[Go to Product page](#)

3 Images

Overview

Quantity:	100 µL
Target:	FOXA1
Binding Specificity:	AA 395-444
Reactivity:	Human, Rat, Mouse, Dog, Cow, Pig, Zebrafish (Danio rerio), Guinea Pig, Monkey
Host:	Rabbit
Clonality:	Polyclonal
Conjugate:	This FOXA1 antibody is un-conjugated
Application:	Western Blotting (WB), Immunohistochemistry (IHC), Immunohistochemistry (Paraffin-embedded Sections) (IHC (p))

Product Details

Brand:	IHC-plus™
Immunogen:	Synthetic peptide located between aa395-444 of human FOXA1 (NP_004487). Percent identity by BLAST analysis: Human, Gorilla, Monkey, Galago, Mouse, Rat, Elephant, Panda, Dog, Bovine, Pig, Opossum, Guinea pig, Lizard (100%), Xenopus (93%), Bat (92%), Stickleback, Zebrafish (85%). Type of Immunogen: Synthetic peptide
Specificity:	Human FOXA1
Predicted Reactivity:	Percent identity by BLAST analysis: Human, Mouse, Rat, Dog, Bovine, Pig, Guinea pig (100%) Zebrafish (85%).

Product Details

Purification: Immunoaffinity purified

Target Details

Target: FOXA1

Alternative Name: FOXA1 ([FOXA1 Products](#))

Background: Name/Gene ID: FOXA1
Family: Transcription factor

Synonyms: FOXA1, Forkhead box A1, Forkhead box protein A1, HNF-3-alpha, HNF-3A, TCF-3A, TCF3A, HNF3A, Transcription factor 3A

Gene ID: 3169

NCBI Accession: [NP_004487](#)

UniProt: [P55317](#)

Pathways: [Intracellular Steroid Hormone Receptor Signaling Pathway](#), [Regulation of Intracellular Steroid Hormone Receptor Signaling](#), [Carbohydrate Homeostasis](#)

Application Details

Application Notes: Approved: IHC, IHC-P (5 µg/mL), WB (0.2 - 1 µg/mL)

Usage: Immunohistochemistry: This antibody was validated for use in immunohistochemistry on a panel of 21 formalin-fixed, paraffin-embedded (FFPE) human tissues after heat induced antigen retrieval in pH 6.0 citrate buffer. After incubation with the primary antibody, slides were incubated with biotinylated secondary antibody, followed by alkaline phosphatase-streptavidin and chromogen. The stained slides were evaluated by a pathologist to confirm staining specificity. The optimal working concentration for this antibody was determined to be 5 µg/mL.

Comment: Target Species of Antibody: Human

Restrictions: For Research Use only

Handling

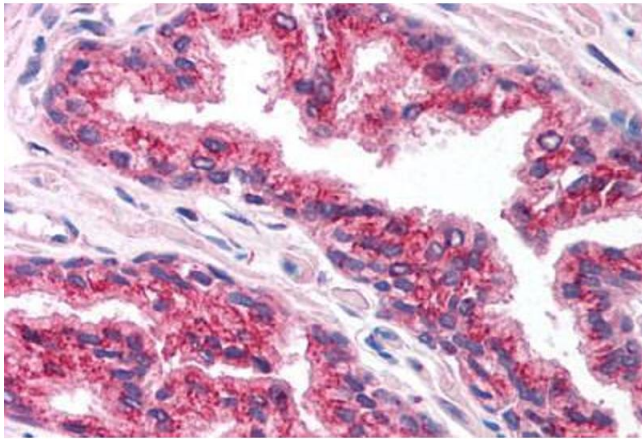
Format: Lyophilized

Reconstitution: After adding water, will consist of PBS buffer with 2 % sucrose

Handling

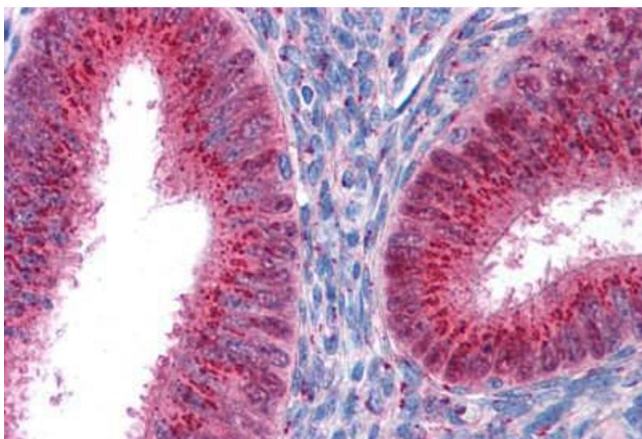
Concentration:	Lot specific
Buffer:	Lyophilized from PBS with 2 % sucrose
Handling Advice:	Avoid repeat freeze-thaw cycles.
Storage:	4 °C,-20 °C
Storage Comment:	Long term: -20°C, the use of 50% glycerol is recommended if storing aliquots in -20°C for long term use (up to 1 year) Short term (less than 1 week): 4°C. Avoid freeze-thaw cycles.

Images



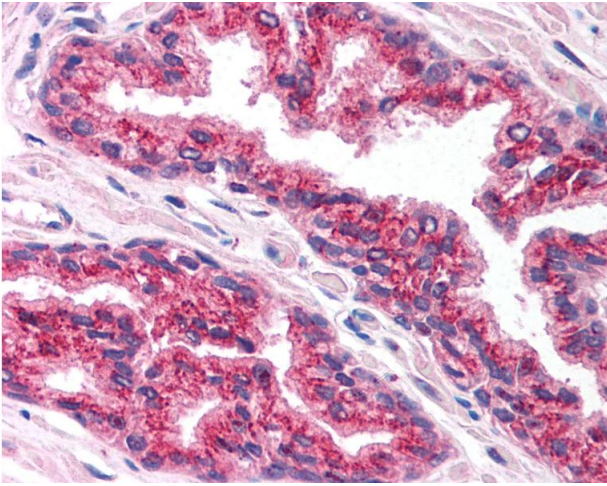
Immunohistochemistry (Paraffin-embedded Sections)

Image 1. Human Prostate (formalin-fixed, paraffin-embedded) stained with FOXA1 antibody ABIN214751 at 5 ug/ml followed by biotinylated goat anti-rabbit IgG secondary antibody ABIN481713, alkaline phosphatase-streptavidin and chromogen.



Immunohistochemistry

Image 2. Human Uterus (formalin-fixed, paraffin-embedded) stained with FOXA1 antibody ABIN214751 at 5 ug/ml followed by biotinylated goat anti-rabbit IgG secondary antibody ABIN481713, alkaline phosphatase-streptavidin and chromogen.



Immunohistochemistry

Image 3. Anti-FOXA1 antibody IHC of human prostate. Immunohistochemistry of formalin-fixed, paraffin-embedded tissue after heat-induced antigen retrieval. Antibody concentration 5 ug/ml. This image was taken for the unconjugated form of this product. Other f ...