

Datasheet for ABIN6736380
anti-FOX E3 antibody (AA 235-284)[Go to Product page](#)

3 Images

Overview

Quantity:	100 µL
Target:	FOX E3
Binding Specificity:	AA 235-284
Reactivity:	Human
Host:	Rabbit
Clonality:	Polyclonal
Conjugate:	This FOX E3 antibody is un-conjugated
Application:	Western Blotting (WB), Immunohistochemistry (IHC), Immunohistochemistry (Paraffin-embedded Sections) (IHC (p))

Product Details

Brand:	IHC-plus™
Immunogen:	Synthetic peptide located between aa235-284 of human FOX E3 (Q13461, NP_036318). Percent identity by BLAST analysis: Human (100%). Type of Immunogen: Synthetic peptide
Specificity:	Human FOX E3
Predicted Reactivity:	Percent identity by BLAST analysis: Human (100%).
Purification:	Immunoaffinity purified

Target Details

Target:	FOXE3
Alternative Name:	FOXE3 (FOXE3 Products)
Background:	Name/Gene ID: FOXE3 Family: Transcription factor Synonyms: FOXE3, ASMD, FKHL12, Forkhead box E3, Forkhead box protein E3, Forkhead protein 8, FREAC-8, FREAC8
Gene ID:	2301
NCBI Accession:	NP_036318
UniProt:	Q13461

Application Details

Application Notes:	Approved: IHC, IHC-P (5 µg/mL), WB (0.2 - 1 µg/mL) Usage: Immunohistochemistry: This antibody was validated for use in immunohistochemistry on a panel of 21 formalin-fixed, paraffin-embedded (FFPE) human tissues after heat induced antigen retrieval in pH 6.0 citrate buffer. After incubation with the primary antibody, slides were incubated with biotinylated secondary antibody, followed by alkaline phosphatase-streptavidin and chromogen. The stained slides were evaluated by a pathologist to confirm staining specificity. The optimal working concentration for this antibody was determined to be 5 µg/mL.
Comment:	Target Species of Antibody: Human
Restrictions:	For Research Use only

Handling

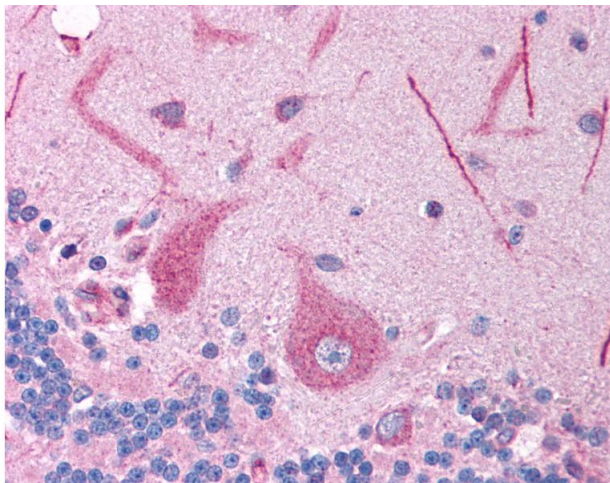
Format:	Lyophilized
Reconstitution:	After adding water, will consist of PBS buffer with 2 % sucrose
Concentration:	Lot specific
Buffer:	Lyophilized from PBS with 2 % sucrose
Handling Advice:	Avoid repeat freeze-thaw cycles.
Storage:	4 °C, -20 °C

Handling

Storage Comment: Long term: -20°C, the use of 50% glycerol is recommended if storing aliquots in -20°C for long term use (up to 1 year)

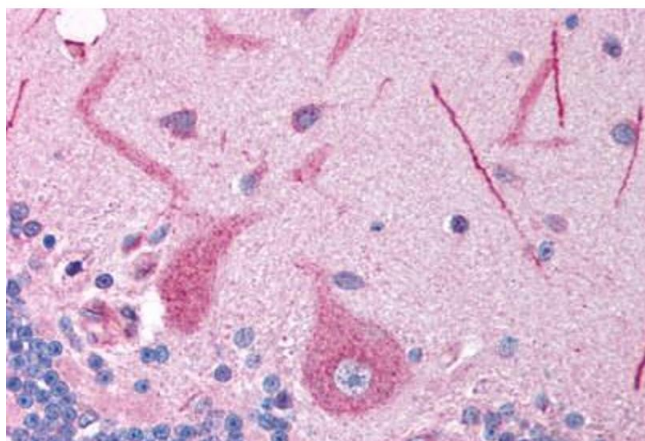
Short term (less than 1 week): 4°C. Avoid freeze-thaw cycles.

Images



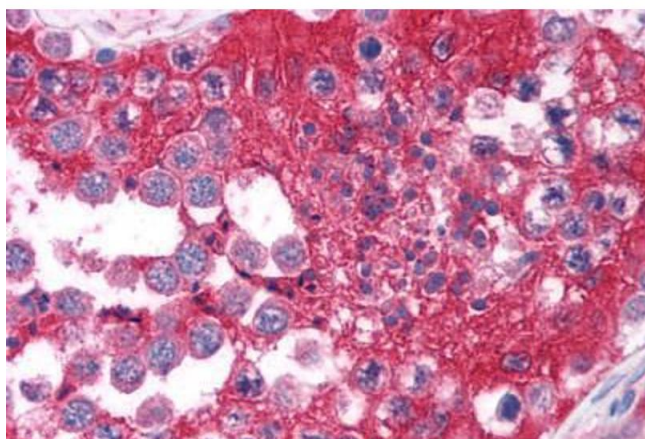
Immunohistochemistry

Image 1. Anti-FOX E3 antibody IHC of human brain, cerebellum. Immunohistochemistry of formalin-fixed, paraffin-embedded tissue after heat-induced antigen retrieval. Antibody concentration 5 ug/ml. This image was taken for the unconjugated form of this product ...



Immunohistochemistry (Paraffin-embedded Sections)

Image 2. Human Brain, Cerebellum (formalin-fixed, paraffin-embedded) stained with FOX E3 antibody ABIN214754 at 5 ug/ml followed by biotinylated goat anti-rabbit IgG secondary antibody ABIN481713, alkaline phosphatase-streptavidin and chromogen.



Immunohistochemistry (Paraffin-embedded Sections)

Image 3. Human Testis (formalin-fixed, paraffin-embedded) stained with FOX E3 antibody ABIN214754 at 5 ug/ml followed by biotinylated goat anti-rabbit IgG secondary antibody ABIN481713, alkaline phosphatase-streptavidin and chromogen.