

Datasheet for ABIN6736385
anti-GABRB2 antibody (AA 143-192)

2 Images

[Go to Product page](#)

Overview

Quantity:	100 µL
Target:	GABRB2
Binding Specificity:	AA 143-192
Reactivity:	Human, Rat, Mouse, Cow, Zebrafish (Danio rerio), Rabbit, Horse, Guinea Pig, Pig, Chicken, Monkey, Bat, Xenopus laevis
Host:	Rabbit
Clonality:	Polyclonal
Conjugate:	This GABRB2 antibody is un-conjugated
Application:	Western Blotting (WB), Immunohistochemistry (IHC), Immunohistochemistry (Paraffin-embedded Sections) (IHC (p))

Product Details

Brand:	IHC-plus™
Immunogen:	<p>Synthetic peptide located between aa143-192 of human GABRB2 (P47870, NP_000804).</p> <p>Percent identity by BLAST analysis: Human, Gorilla, Orangutan, Gibbon, Monkey, Galago, Marmoset, Mouse, Rat, Elephant, Panda, Cat, Bovine, Bat, Rabbit, Horse, Pig, Opossum, Guinea pig, Turkey, Zebra finch, Chicken, Platypus, Lizard, Xenopus, Frog, Stickleback (100%), Dog (83%).</p> <p>Type of Immunogen: Synthetic peptide</p>
Specificity:	Human GABRB2

Product Details

Predicted Reactivity: Percent identity by BLAST analysis: Human, Bovine, Rabbit, Horse, Pig, Chicken, Zebrafish (100%).

Purification: Immunoaffinity purified

Target Details

Target: GABRB2

Alternative Name: GABRB2 ([GABRB2 Products](#))

Background: Name/Gene ID: GABRB2
Subfamily: GABA A receptor
Family: Ion Channel

Synonyms: GABRB2, GABA A receptor beta 2, GABA(A) receptor, beta 2

Gene ID: 2561

NCBI Accession: [NP_000804](#)

UniProt: [P47870](#)

Pathways: [Sensory Perception of Sound](#), [Synaptic Membrane](#)

Application Details

Application Notes: Approved: IHC, IHC-P (5 µg/mL), WB (0.2 - 1 µg/mL)

Usage: Immunohistochemistry: This antibody was validated for use in immunohistochemistry on a panel of 21 formalin-fixed, paraffin-embedded (FFPE) human tissues after heat induced antigen retrieval in pH 6.0 citrate buffer. After incubation with the primary antibody, slides were incubated with biotinylated secondary antibody, followed by alkaline phosphatase-streptavidin and chromogen. The stained slides were evaluated by a pathologist to confirm staining specificity. The optimal working concentration for this antibody was determined to be 5 µg/mL.

Comment: Target Species of Antibody: Human

Restrictions: For Research Use only

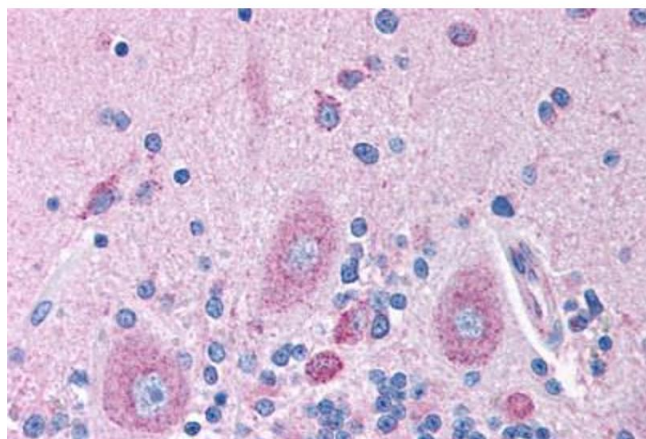
Handling

Format: Lyophilized

Handling

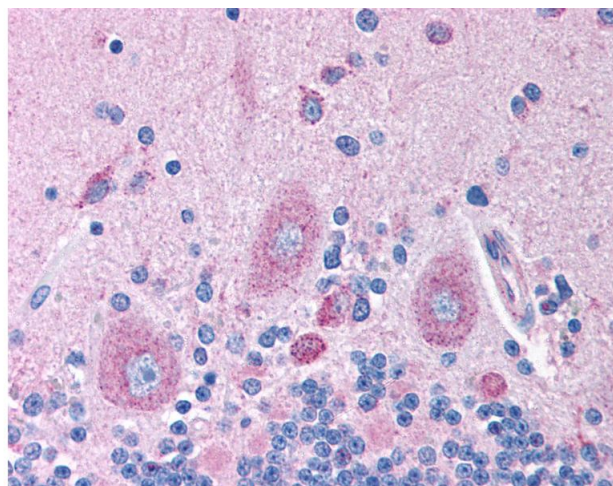
Reconstitution:	After adding water, will consist of PBS buffer with 2 % sucrose
Concentration:	Lot specific
Buffer:	Lyophilized from PBS with 2 % sucrose
Handling Advice:	Avoid repeat freeze-thaw cycles.
Storage:	4 °C, -20 °C
Storage Comment:	Long term: -20°C, the use of 50% glycerol is recommended if storing aliquots in -20°C for long term use (up to 1 year) Short term (less than 1 week): 4°C. Avoid freeze-thaw cycles.

Images



Immunohistochemistry (Paraffin-embedded Sections)

Image 1. Human Brain, Cerebellum (formalin-fixed, paraffin-embedded) stained with GABRB2 antibody ABIN214759 at 5 ug/ml followed by biotinylated goat anti-rabbit IgG secondary antibody ABIN481713, alkaline phosphatase-streptavidin and chromogen.



Immunohistochemistry

Image 2. Anti-GABRB2 antibody IHC of human brain, cerebellum. Immunohistochemistry of formalin-fixed, paraffin-embedded tissue after heat-induced antigen retrieval. Antibody concentration 5 ug/ml. This image was taken for the unconjugated form of this product ...