

Datasheet for ABIN6736386
anti-GABRE antibody (AA 237-286)[Go to Product page](#)

2 Images

Overview

Quantity:	100 µL
Target:	GABRE
Binding Specificity:	AA 237-286
Reactivity:	Human, Guinea Pig, Mouse, Rabbit, Monkey
Host:	Rabbit
Clonality:	Polyclonal
Conjugate:	This GABRE antibody is un-conjugated
Application:	Western Blotting (WB), Immunohistochemistry (Paraffin-embedded Sections) (IHC (p)), Immunohistochemistry (IHC)

Product Details

Brand:	IHC-plus™
Immunogen:	Synthetic peptide located between aa237-286 of human GABRE. Percent identity by BLAST analysis: Human, Chimpanzee, Gorilla, Gibbon, Monkey (100%), Rat (92%), Rabbit (85%), Mouse (84%). Type of Immunogen: Synthetic peptide
Specificity:	Human GABRE
Predicted Reactivity:	Percent identity by BLAST analysis: Human (100%) Rat (92%) Rabbit (85%) Mouse (84%).
Purification:	Immunoaffinity purified

Target Details

Target:	GABRE
Alternative Name:	GABRE (GABRE Products)
Background:	Name/Gene ID: GABRE Subfamily: GABA A receptor Family: Ion Channel Synonyms: GABRE, GABA receptor epsilon, GABA(A) receptor, epsilon
Gene ID:	2564
UniProt:	P78334
Pathways:	Synaptic Membrane

Application Details

Application Notes:	Approved: IHC, IHC-P (2.5 µg/mL), WB (0.2 - 1 µg/mL) Usage: Immunohistochemistry: This antibody was validated for use in immunohistochemistry on a panel of 21 formalin-fixed, paraffin-embedded (FFPE) human tissues after heat induced antigen retrieval in pH 6.0 citrate buffer. After incubation with the primary antibody, slides were incubated with biotinylated secondary antibody, followed by alkaline phosphatase-streptavidin and chromogen. The stained slides were evaluated by a pathologist to confirm staining specificity. The optimal working concentration for this antibody was determined to be 2.5 µg/mL.
Comment:	Target Species of Antibody: Human
Restrictions:	For Research Use only

Handling

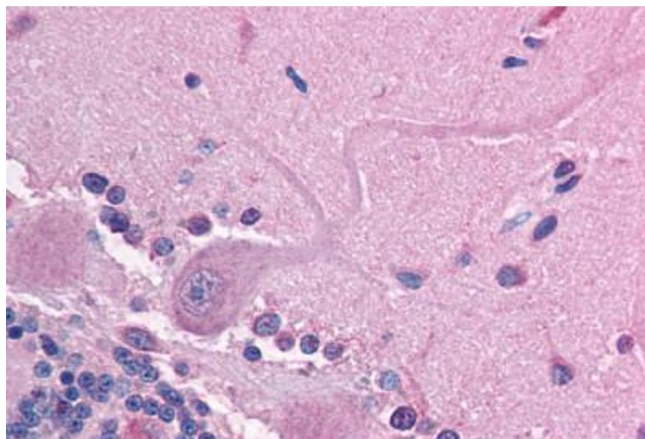
Format:	Lyophilized
Reconstitution:	After adding water, will consist of PBS buffer with 2 % sucrose
Concentration:	Lot specific
Buffer:	Lyophilized from PBS with 2 % sucrose
Handling Advice:	avoid freeze thaw cycles.
Storage:	4 °C, -20 °C

Handling

Storage Comment: Long term: -20°C, the use of 50% glycerol is recommended if storing aliquots in -20°C for long term use (up to 1 year)

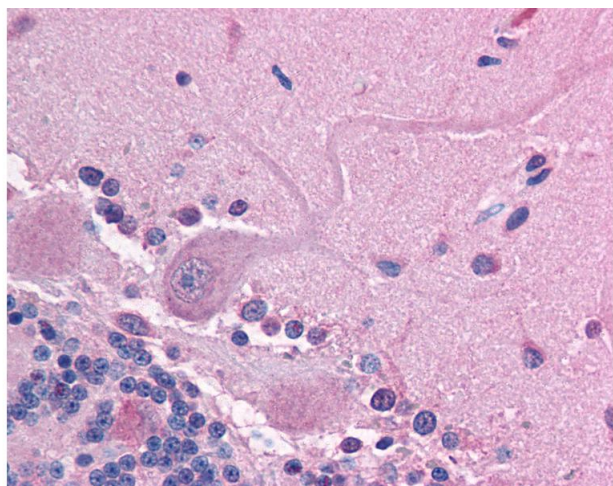
Short term (less than 1 week): 4°C. Avoid freeze-thaw cycles.

Images



Immunohistochemistry (Paraffin-embedded Sections)

Image 1. Human Brain, Cerebellum (formalin-fixed, paraffin-embedded) stained with GABRE antibody ABIN214760 at 2.5 ug/ml followed by biotinylated goat anti-rabbit IgG secondary antibody ABIN481713, alkaline phosphatase-streptavidin and chromogen.



Immunohistochemistry

Image 2. Anti-GABRE antibody IHC of human brain, cerebellum. Immunohistochemistry of formalin-fixed, paraffin-embedded tissue after heat-induced antigen retrieval. Antibody concentration 5 ug/ml. This image was taken for the unconjugated form of this product ...